

FLOOR PLAN

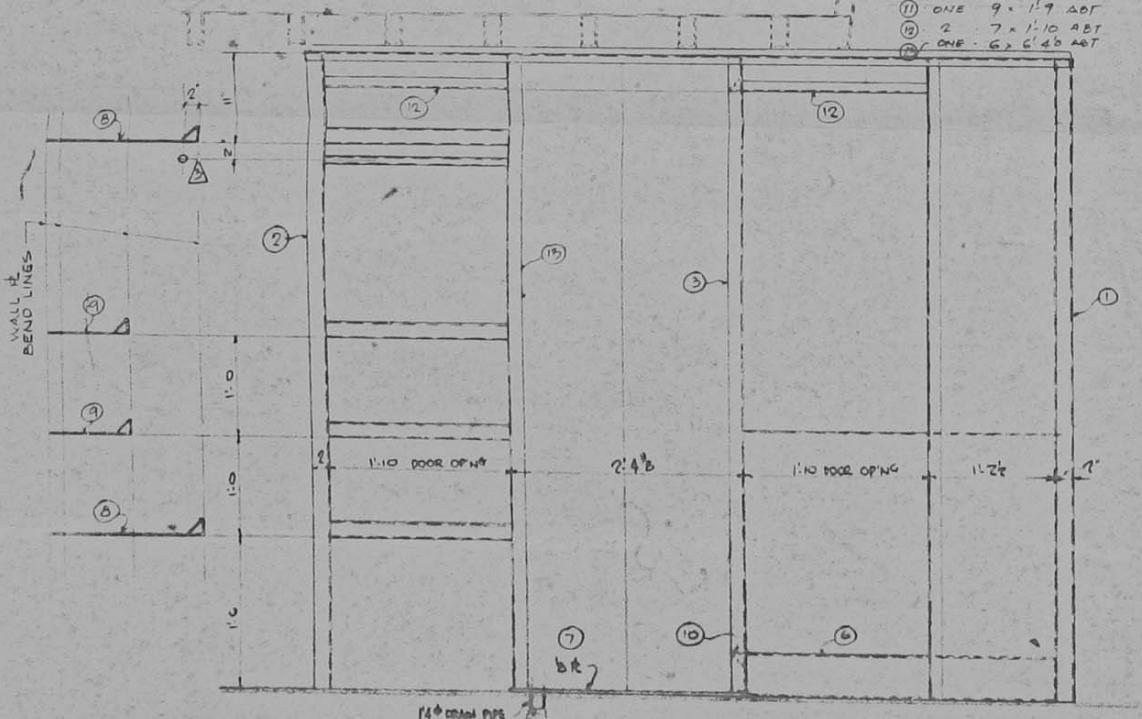
- .072 SHEET**
- ① ONE - 55 x 6'46 ABT
 - ② ONE - 57 x 6'46 ABT
 - ③ ONE - 64 x 6'46 ABT
 - ④ ONE - 42 x 6'46 ABT
 - ⑤ ONE - 52 x 7'98 ABT
 - ⑥ 2 - 24 x 2'2 ABT
 - ⑦ 2 - 15 x 2'2 ABT
 - ⑧ ONE - 12 x 2'1 ABT
 - ⑨ ONE - 9 x 1'9 ABT
 - ⑩ 2 - 7 x 1'10 ABT
 - ⑪ ONE - 6 x 6'40 ABT



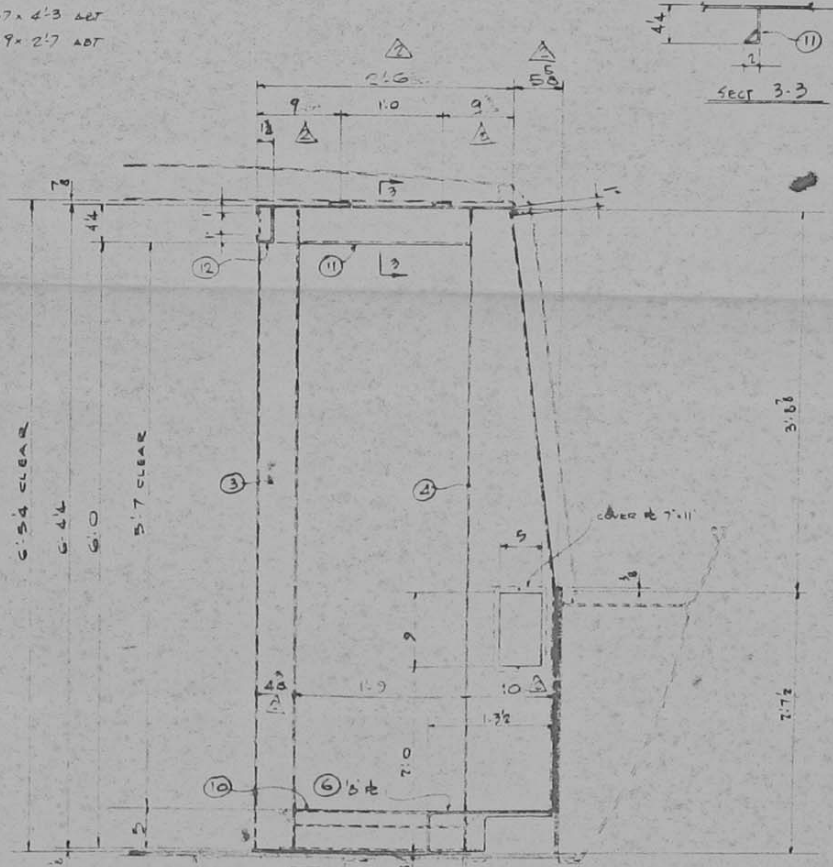
CEILING PLAN

ALL FORMED SHEETS (EXC NOTED) TO BE OF .072 MT'L

- .125 SHEET**
- ⑥ ONE - 37 x 4'3 ABT
 - ⑦ ONE - 29 x 2'7 ABT



ELEVATION AA



SECTION BB

①	①	①	①	①	①	①	①	①	①
②	②	②	②	②	②	②	②	②	②
③	③	③	③	③	③	③	③	③	③
④	④	④	④	④	④	④	④	④	④
⑤	⑤	⑤	⑤	⑤	⑤	⑤	⑤	⑤	⑤
⑥	⑥	⑥	⑥	⑥	⑥	⑥	⑥	⑥	⑥
⑦	⑦	⑦	⑦	⑦	⑦	⑦	⑦	⑦	⑦
⑧	⑧	⑧	⑧	⑧	⑧	⑧	⑧	⑧	⑧
⑨	⑨	⑨	⑨	⑨	⑨	⑨	⑨	⑨	⑨
⑩	⑩	⑩	⑩	⑩	⑩	⑩	⑩	⑩	⑩
⑪	⑪	⑪	⑪	⑪	⑪	⑪	⑪	⑪	⑪

TOTAL # OF SHEETS REQD

28 - .072 72 x 156
 25 - .072 64 x 156
 14 - .072 60 x 156

TOTAL # OF SHEETS REQD
 9 - .125 57 x 192
 2 - .125 60 x 192

ALL QUANTITIES SHOWN ARE FOR 28 UNITS

REV	DATE	DESCRIPTION	BY
①	JAN 1989	NEW DWG - PREVIOUS DWG CANCELLED	JL
②	JAN 1989	GEN REVISION	JR
③	JAN 1989	CUTTING PARTS ADDED	JL

SCALE: 1/8" = 1'-0"

PROJECT: ALCAN PROJECT 370 SHOWER HEAD DETAILS

PROJECT DEVELOPMENT DIVISION

ALCAN ALUMINUM COMPANY OF CANADA LTD

15025-027 JUN 89 K-365 R-03-096