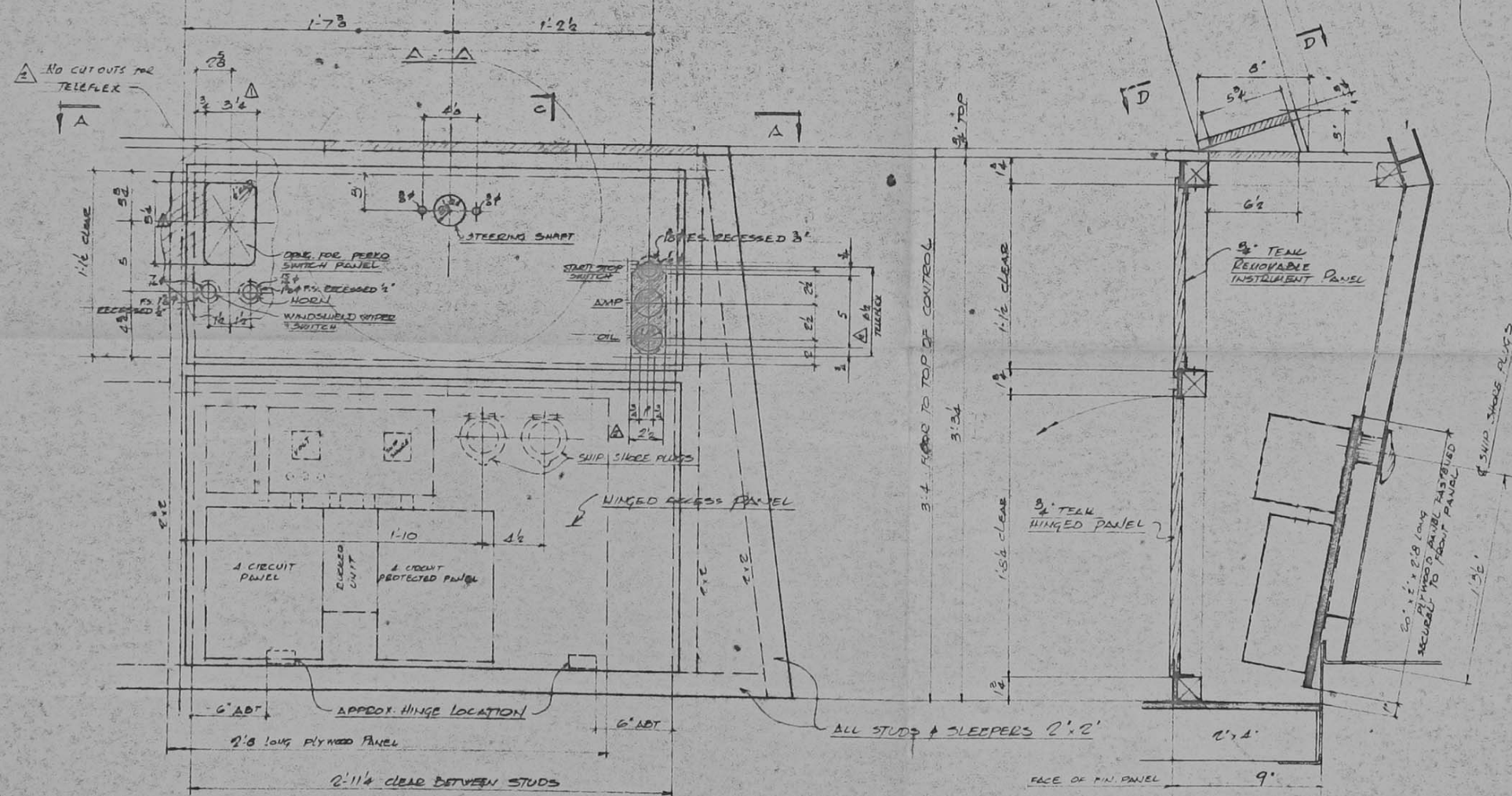
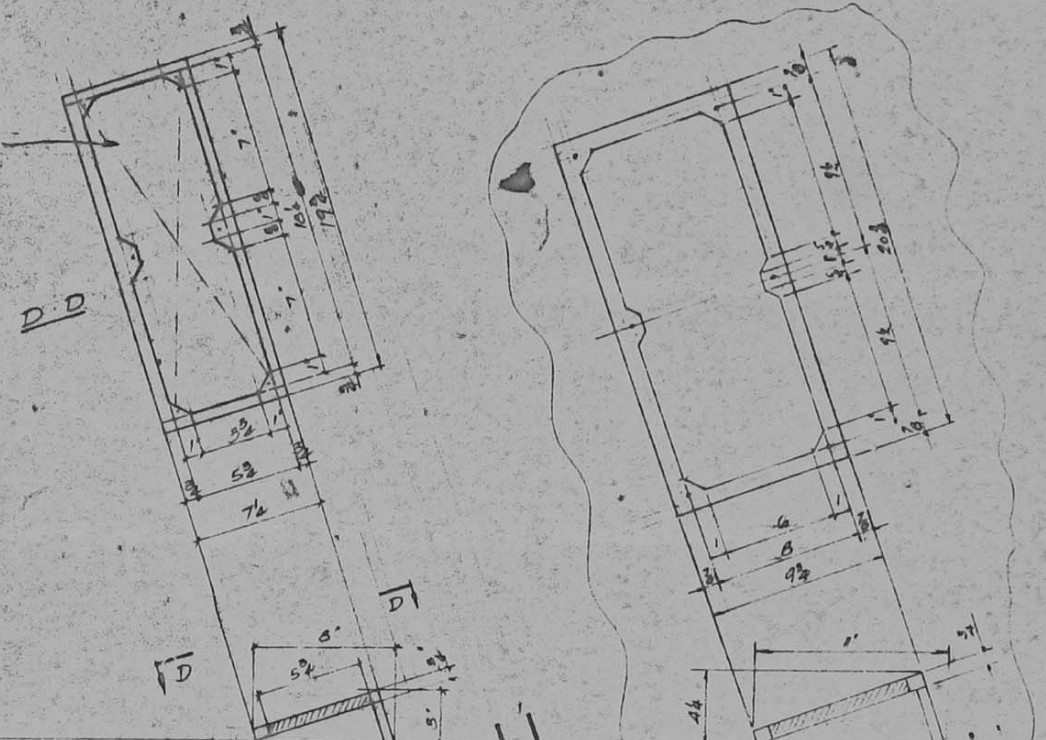
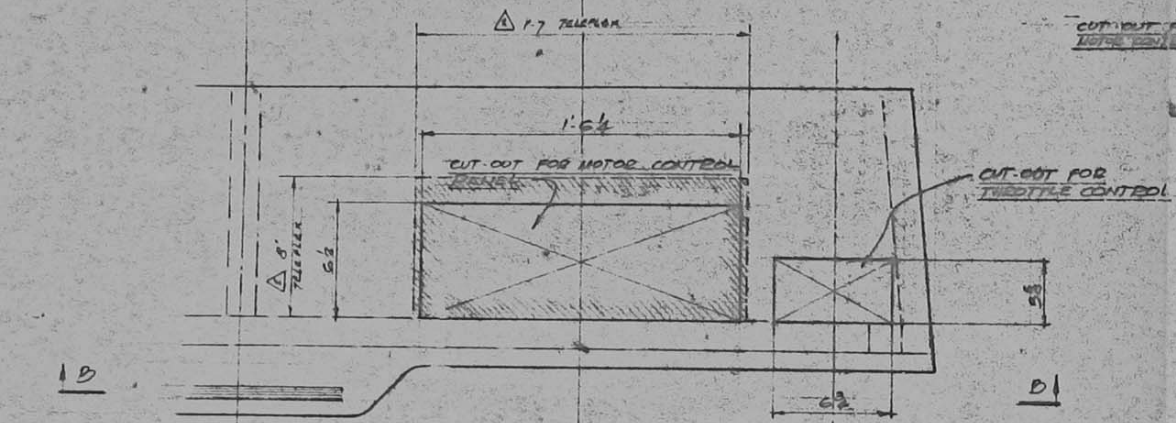


BOAT WHEELHOUSE

WHEEL & CONTROL PANEL



REV.	DATE	DESCRIPTION	BY
1		2 28 1/2" HIGHER THAN TELEPLEX PANELS	FL
2		1 1/2" FROM TRANS. POINT AND FROM PANEL BODY	FL
3		REVISION	FL

SCALE: 1/2" = 1'-0"

ALCAN PROJECT 376  
INSTRUMENT PANEL  
LAYOUT & DETAILS  
FOR PROJECT DEVELOPMENT DIV.

APPROVED: [Signature] JUN 69  
ALCAN ALUMINUM COMPANY OF CANADA LTD. 69  
TRANSPORTATION AND STRUCTURES DIVISION  
PROJECT 376

PROJECT NO. 1029-027 M. 370 P. 01  
A-03-101