

ALL PLATES 6'

SCALE	U.S.B.	DATE	11/27/61	GENERAL DIVISION	MM
DESIGNED	41 Super	BY		DESCRIPTION	BY
ALCAN PROJECT 370					
AFT CABIN DETAILS					
FOR PROJECT DEVELOPMENT DIVN					
APPROVED	11/27/61	BY		ALUMINUM COMPANY OF CANADA LTD.	69
TRANSPORTATION AND STRUCTURE DIVISION					
REVISION NO.					
PROJECT NO.	1525 027	REV.	05 63	REV.	N-312
ROL					
A-03-085					













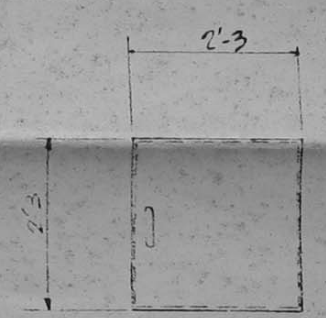
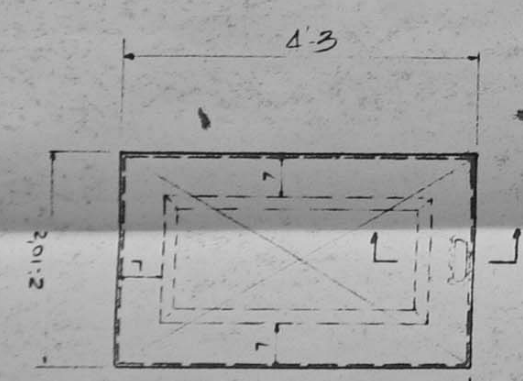
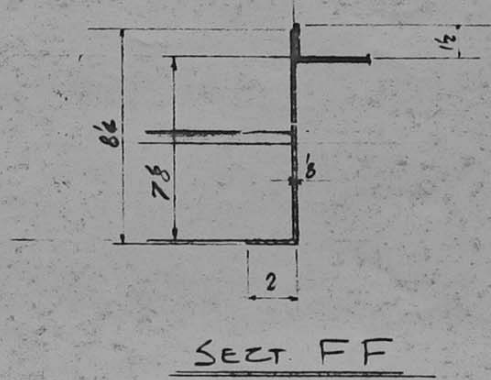
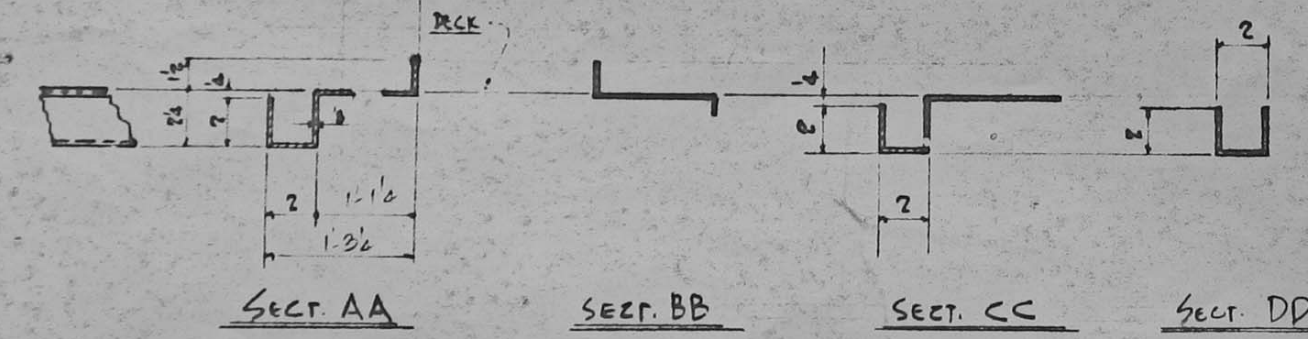
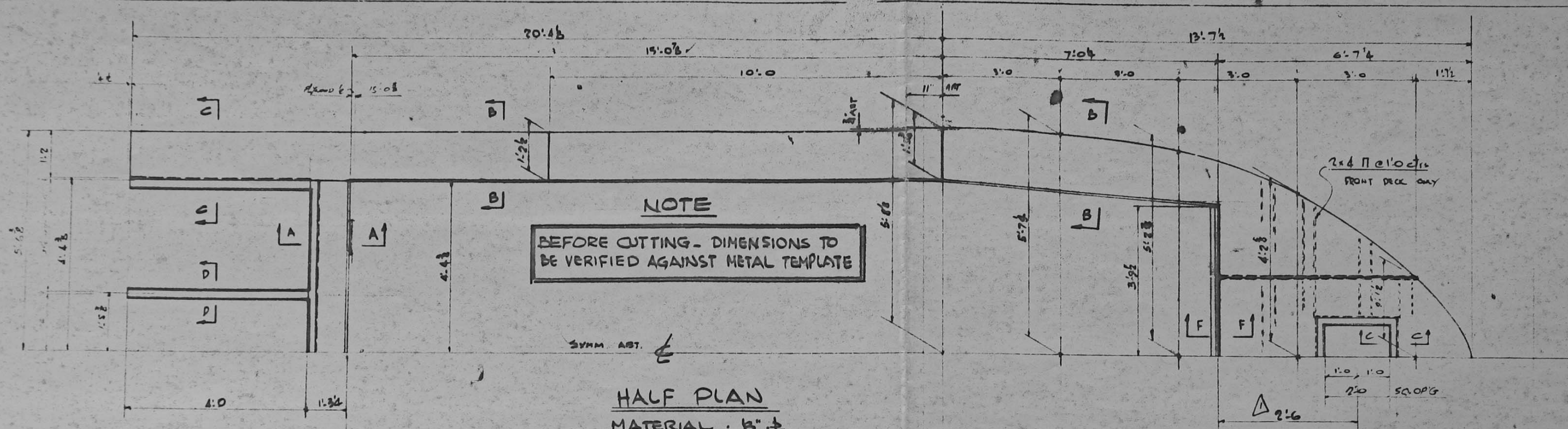












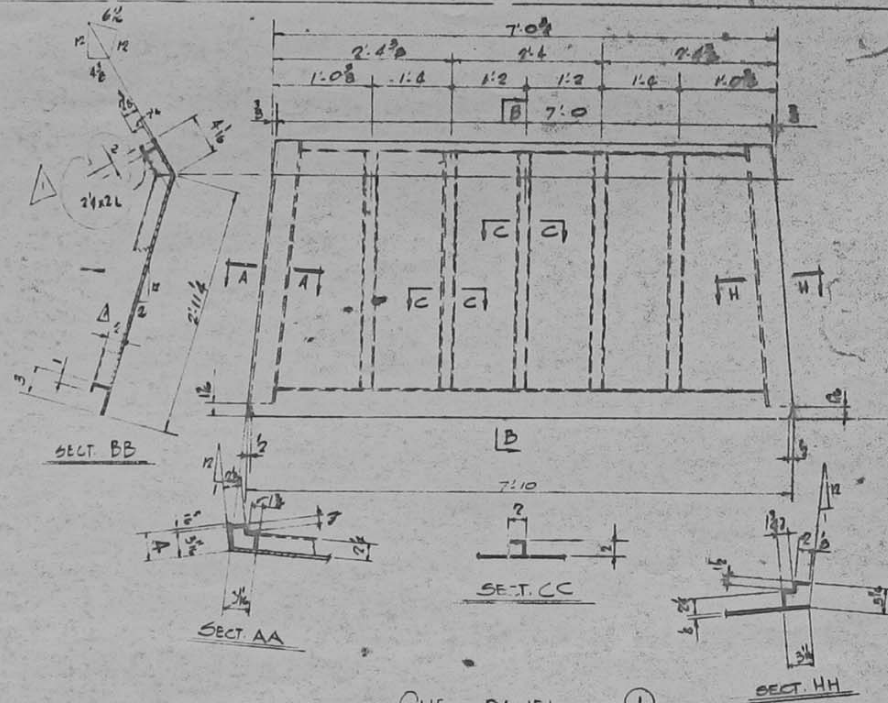




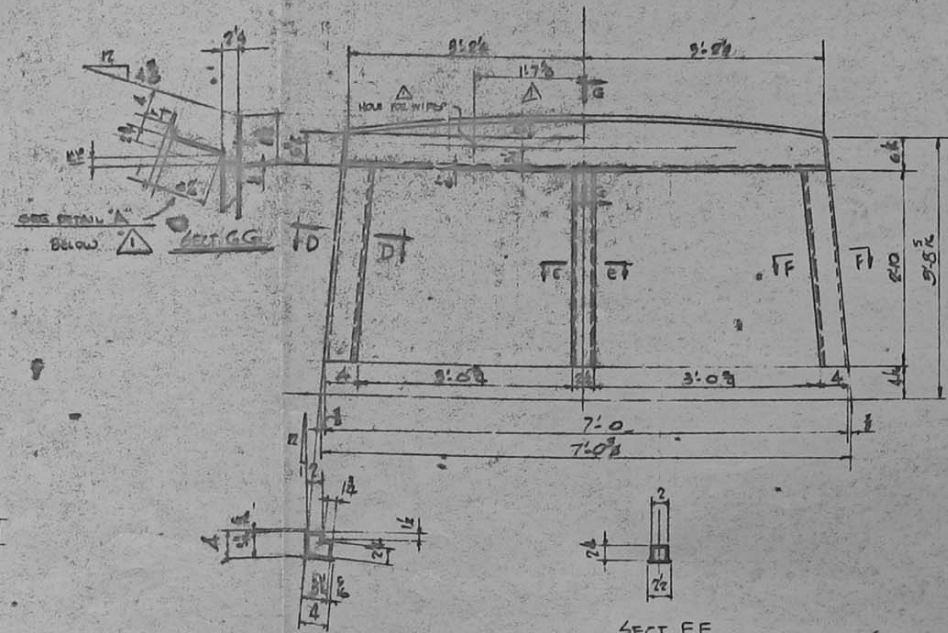






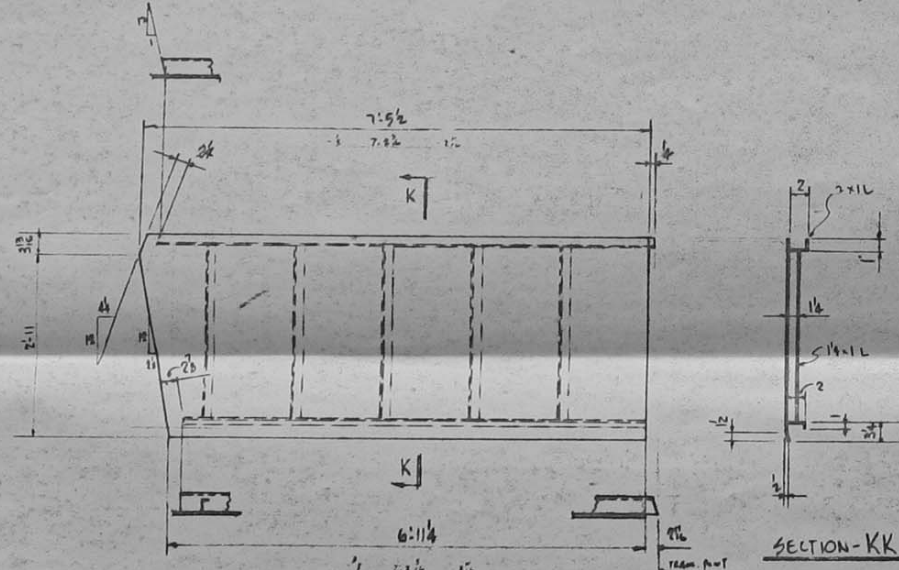


ONE - PANEL - ①



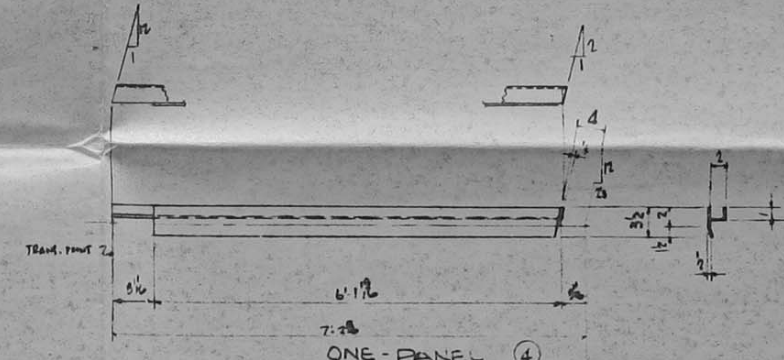
SECT DD (AS SHOWN)  
SECT FF (LEFT OF SHOWN)

ONE - PANEL ②

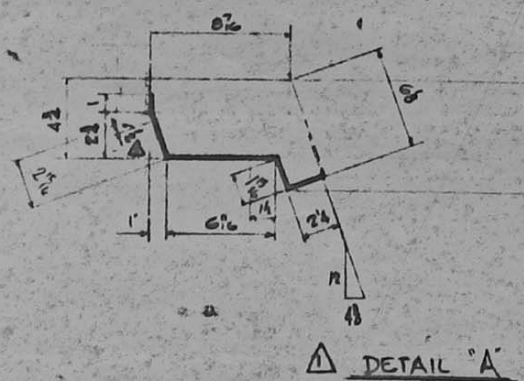


ONE - PANEL - ③

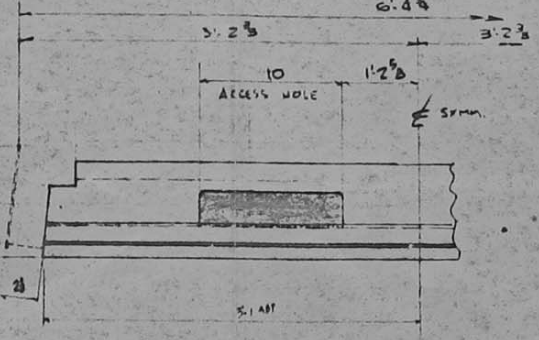
SECTION-KK



ONE - PANEL ④



DETAIL "A"



△ ACCESS HOLE DET A REV.	DATE	BY
△ PANEL 1, 2 REV. DET. A ADDD	JAN 20, 69	JL
REV	DESCRIPTION	DATE

SCALE \_\_\_\_\_

DESIGNED BY J. CARDINAL

APPROVED BY *[Signature]*

PROJECT NO. 1525-027

ALCAN PROJECT 570  
FRONT CABIN DETAILS

FOR PROJECT DEV'T DIVISION

ALUMINUM COMPANY OF CANADA LTD. 69  
TRANSPORTATION AND STRUCTURES DIVISION  
MONTREAL, QUE.

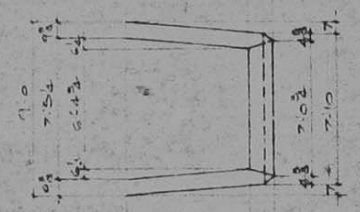
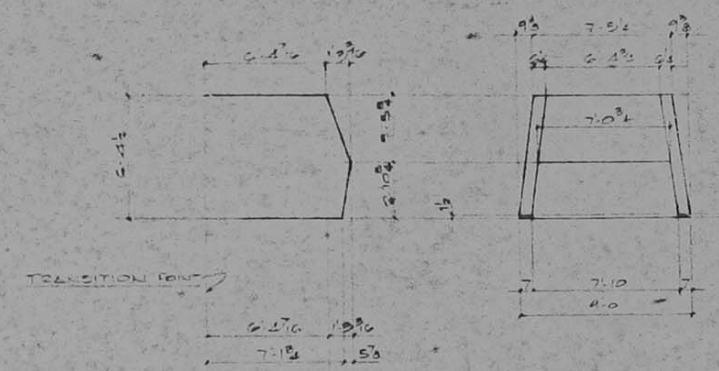
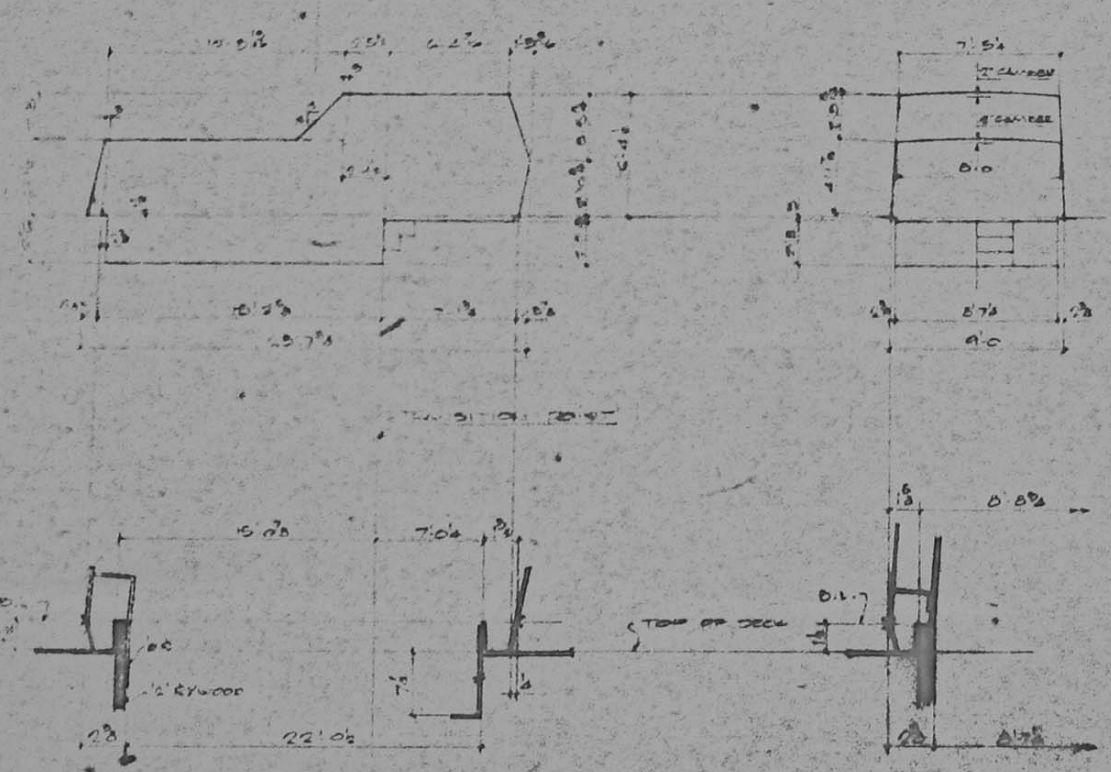
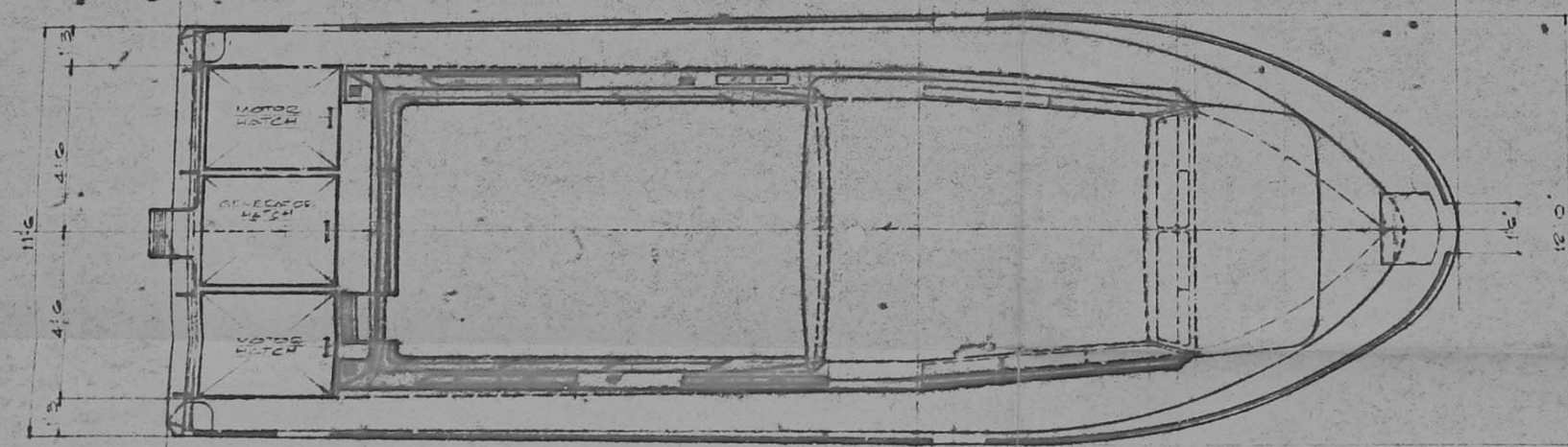
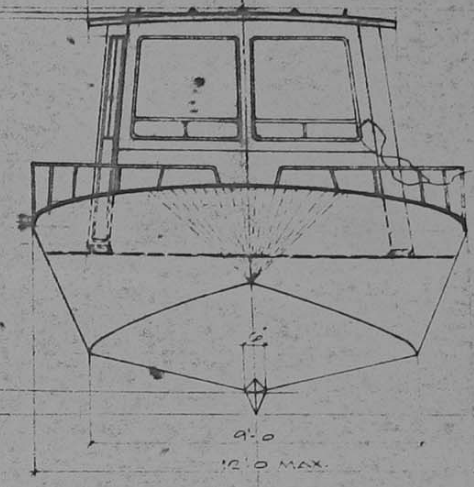
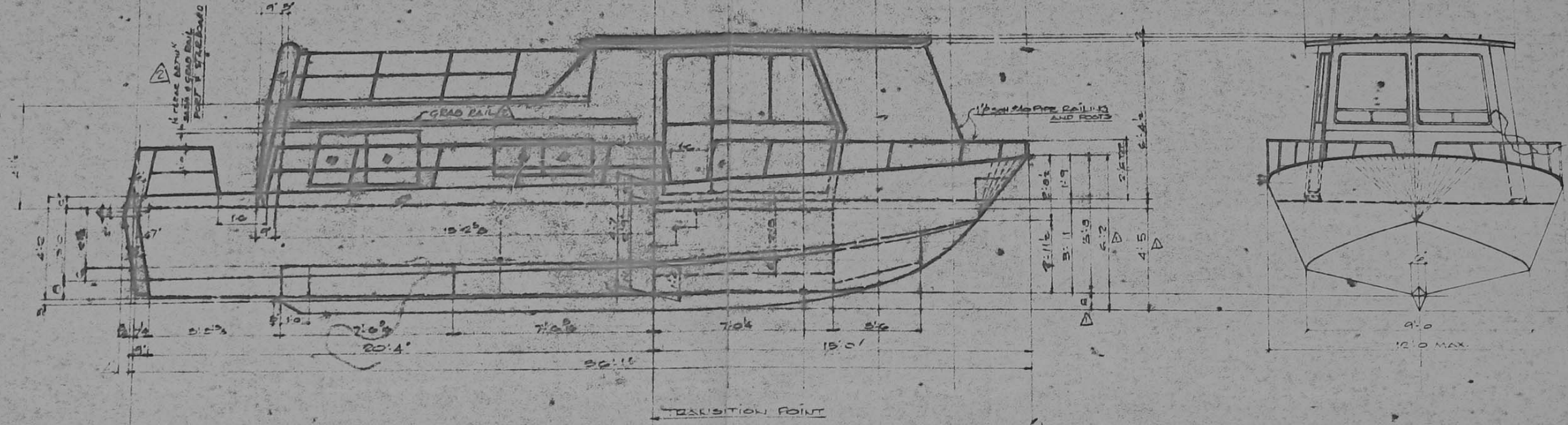
DATE M-312 R02

A-03-084









REV. NO.	DATE	DESCRIPTION
0	FEB 26 1965	ORIG. LOCATED
1	MAY 19 1965	LEVEL WARD AREA CHANGED TO C.A.S. RADIATED
2		

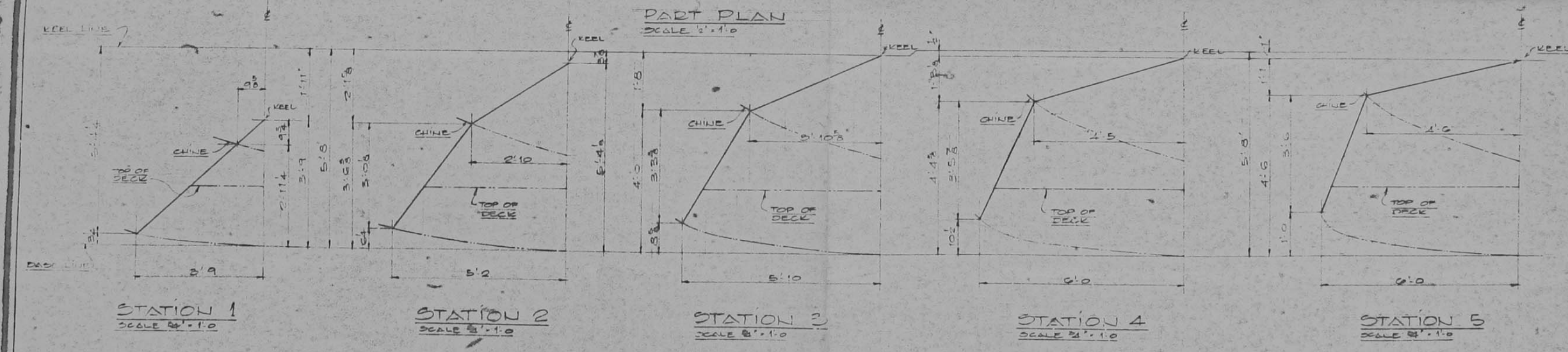
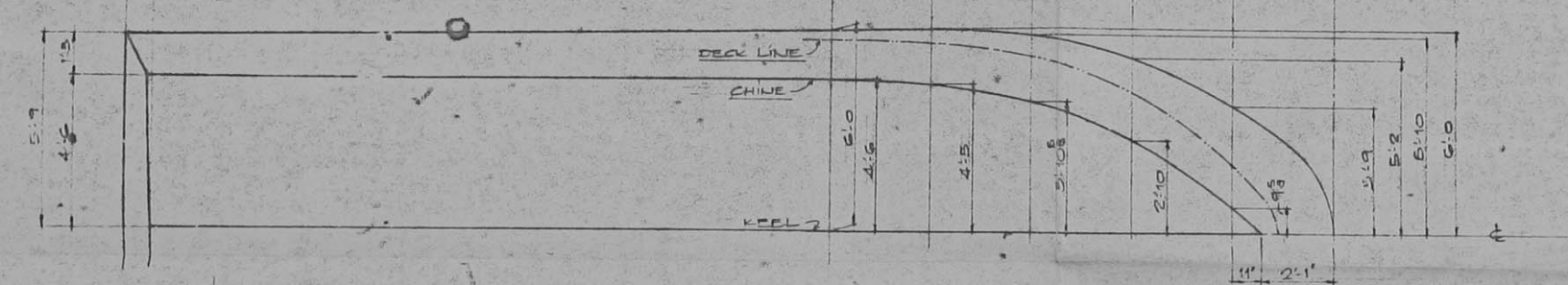
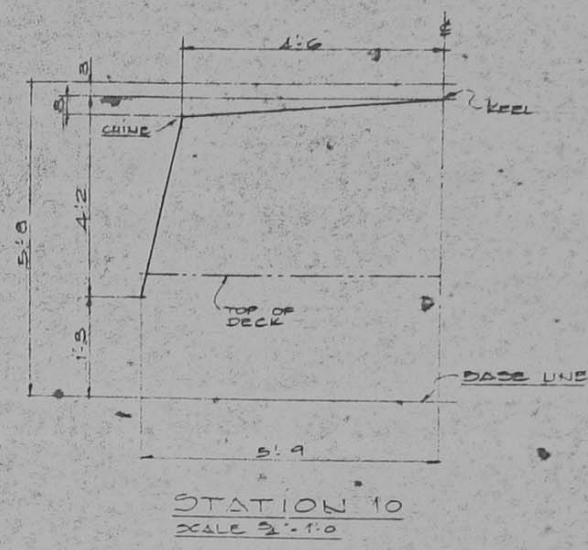
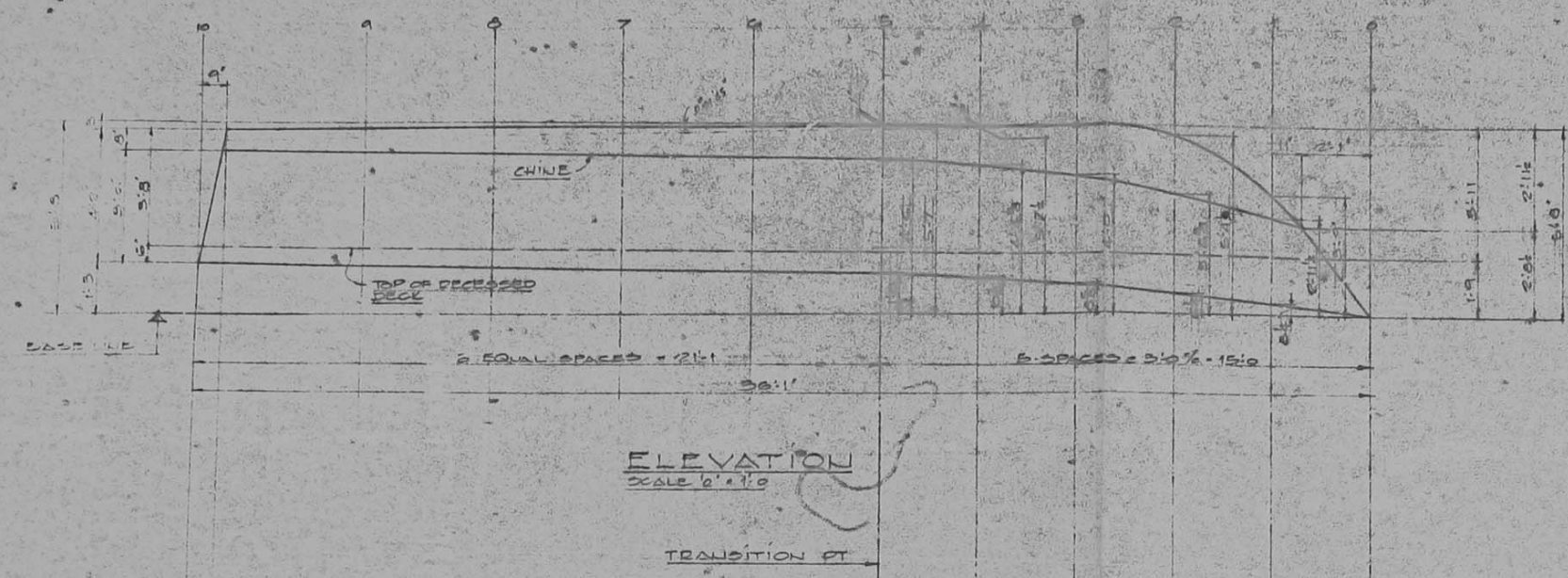
SCALE: N.S.E.  
 DRAWN BY: A.F. Lupert  
 CHECKED BY: [Signature]  
 APPROVED BY: [Signature]  
 PROJECT: 1505-027  
 DATE: DEC 1965  
 SHEET: M-501-802

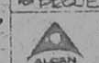
**ALCAN PROJECT 870**  
**GENERAL ARRANGEMENT**  
**PLAN + ELEVATION**  
 FOR PROJECT DEVT DIVISION

ALUMINUM COMPANY OF CANADA LTD.  
 TRANSPORTATION AND COLLECTIVE DIVISION

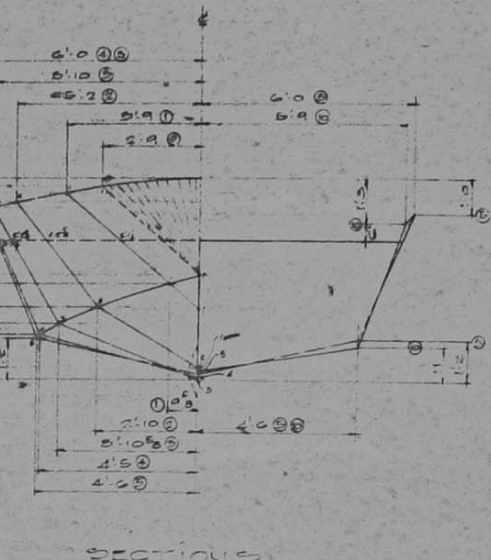
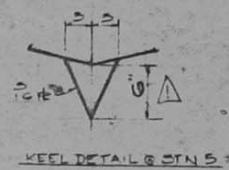
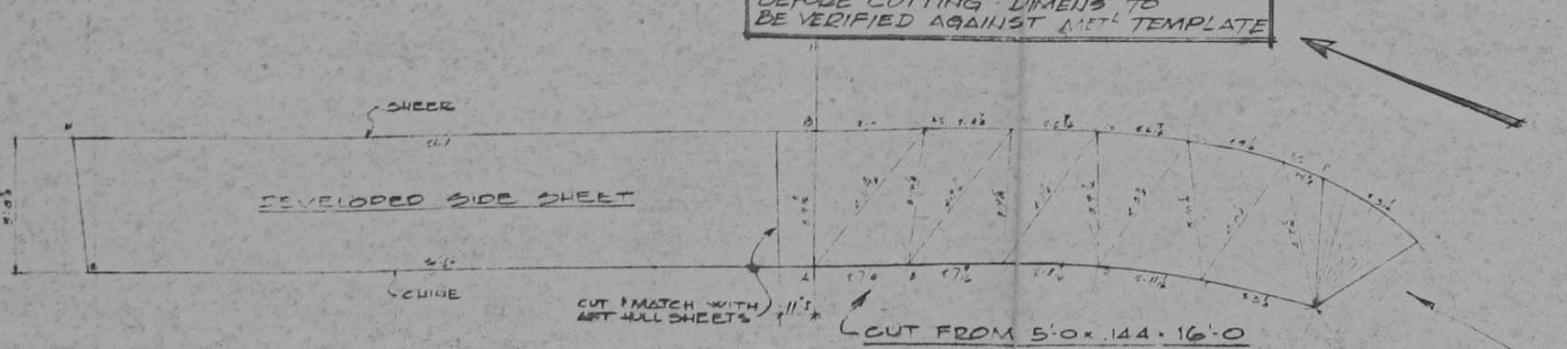
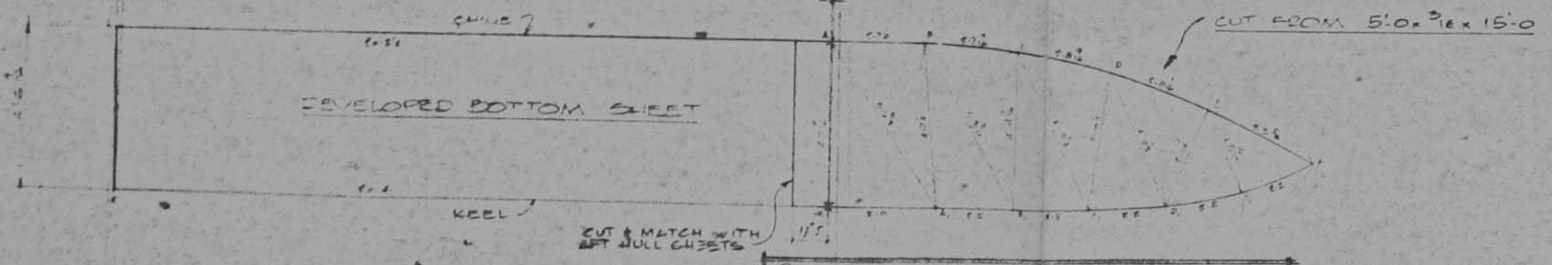
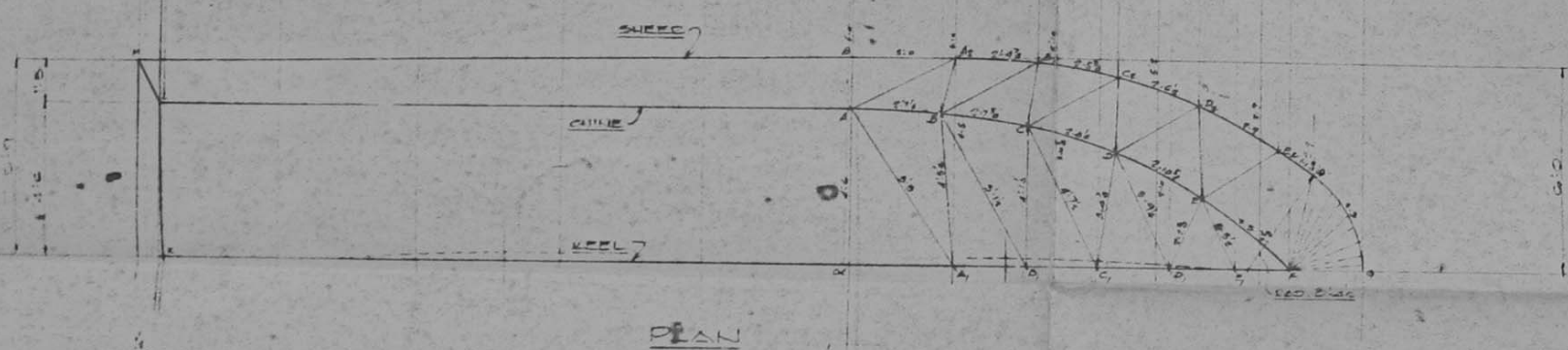
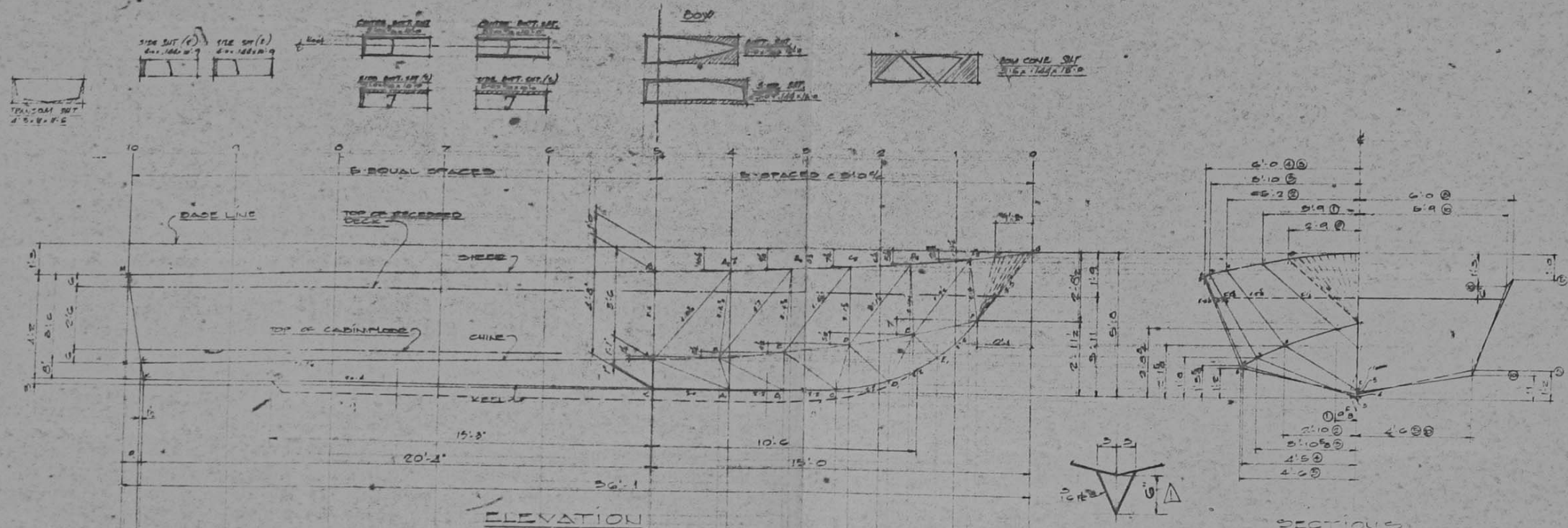
A-03-074





SCALE 1/4" = 1'-0"	<b>ALCAN PROJECT 370</b> HULL DEVELOPMENT DETAIL OF STATION 10 AHEAD OF TRANSITION POINT FOR PROJECT DEVELOPMENT DIVISION
DESIGNED BY V.S.B.	
CHECKED BY H.P. LUBERT	
APPROVED BY P. SUTHERLAND	
PROJECT NUMBER 7825-027	
 ALUMINUM COMPANY OF CANADA LTD. TRANSPORTATION AND STRUCTURES DIVISION	
PROJECT NO. 7825-027 SHEET 11 OF 25 DRAWING NO. <b>MF 3058-903</b> <b>A-03-011</b>	





SIDES		BOTTOMS		CHINE	
1	1.12	A	1.12	A	1.12
2	1.12	B	1.12	B	1.12
3	1.12	C	1.12	C	1.12
4	1.12	D	1.12	D	1.12
5	1.12	E	1.12	E	1.12
6	1.12	F	1.12	F	1.12
7	1.12	G	1.12	G	1.12
8	1.12	H	1.12	H	1.12
9	1.12	I	1.12	I	1.12
10	1.12	J	1.12	J	1.12
11	1.12	K	1.12	K	1.12
12	1.12	L	1.12	L	1.12
13	1.12	M	1.12	M	1.12
14	1.12	N	1.12	N	1.12
15	1.12	O	1.12	O	1.12
16	1.12	P	1.12	P	1.12
17	1.12	Q	1.12	Q	1.12
18	1.12	R	1.12	R	1.12
19	1.12	S	1.12	S	1.12
20	1.12	T	1.12	T	1.12
21	1.12	U	1.12	U	1.12
22	1.12	V	1.12	V	1.12
23	1.12	W	1.12	W	1.12
24	1.12	X	1.12	X	1.12
25	1.12	Y	1.12	Y	1.12
26	1.12	Z	1.12	Z	1.12

SCALE: USE

DESIGNED BY: L.F. Rupert

PROJECT: ALCAN PROJECT 370 HULL DEVELOPMENT PLAN, ELEVATIONS & SECTIONS FOR PROJECT DEVELOPMENT CO.

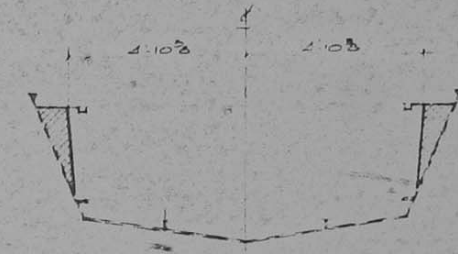
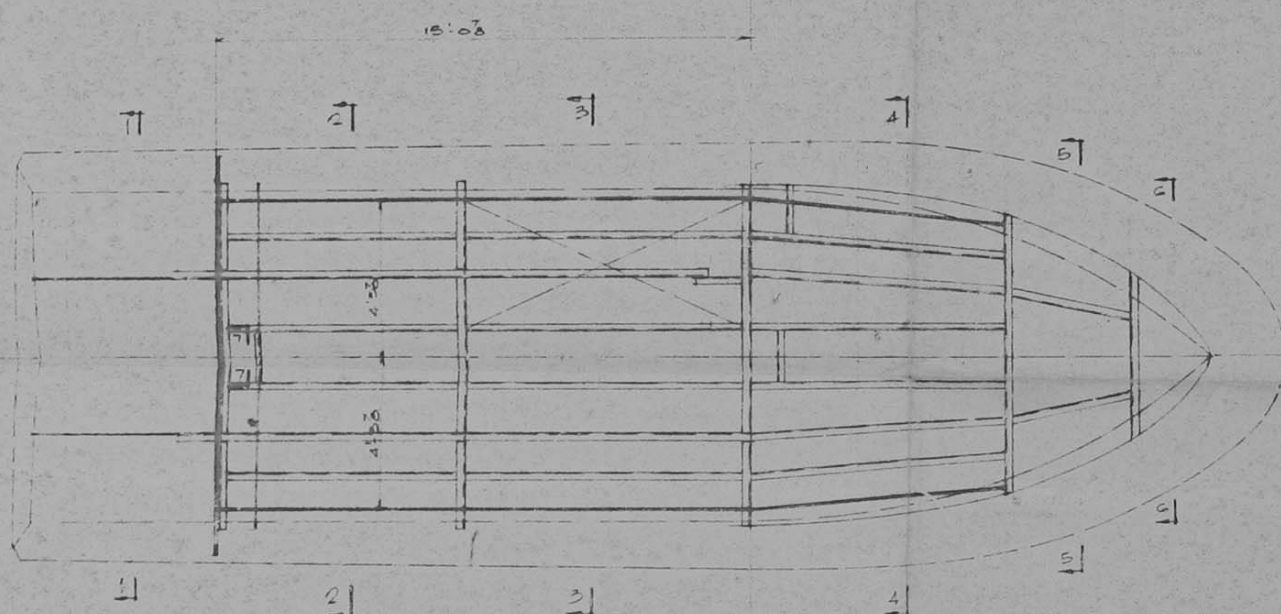
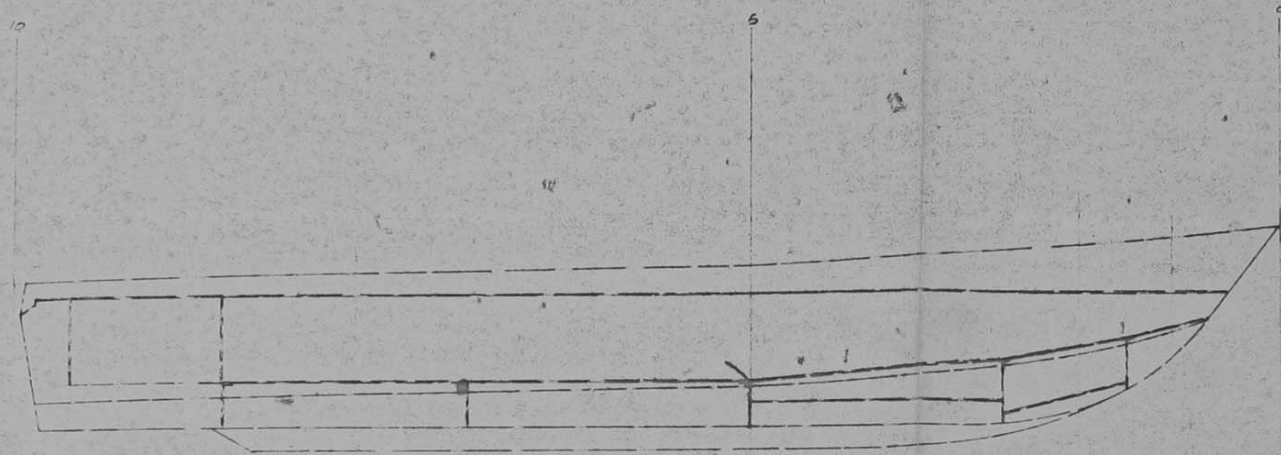
ALUMINUM COMPANY OF CANADA LTD.

PROJECT NO: 15025-017

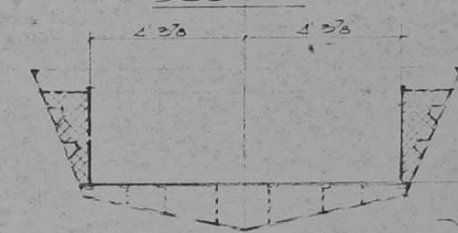
DATE: M-202-001

A-03-076





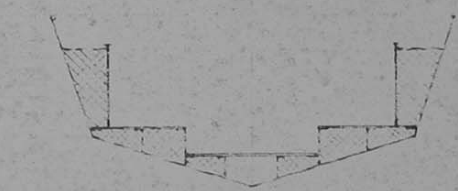
SECT. 1-1



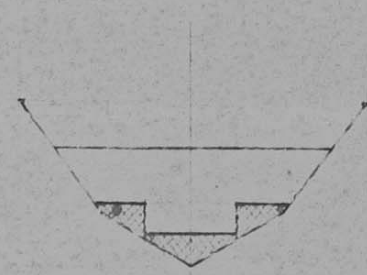
SECT. 2-2



SECT. 3-3



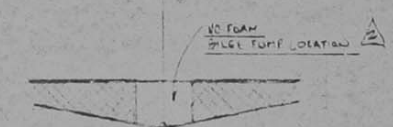
SECT. 4-4



SECT. 5-5



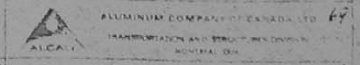
SECT. 6-6



SECT. 7-7

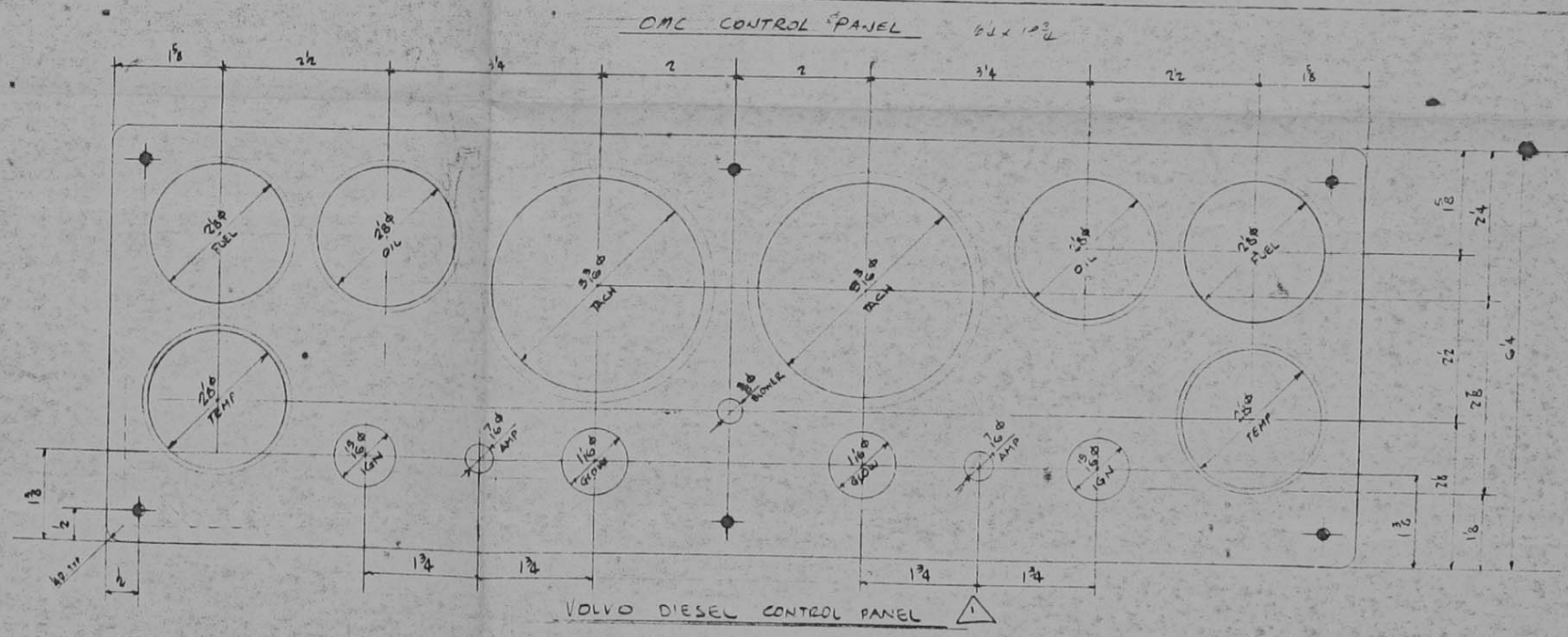
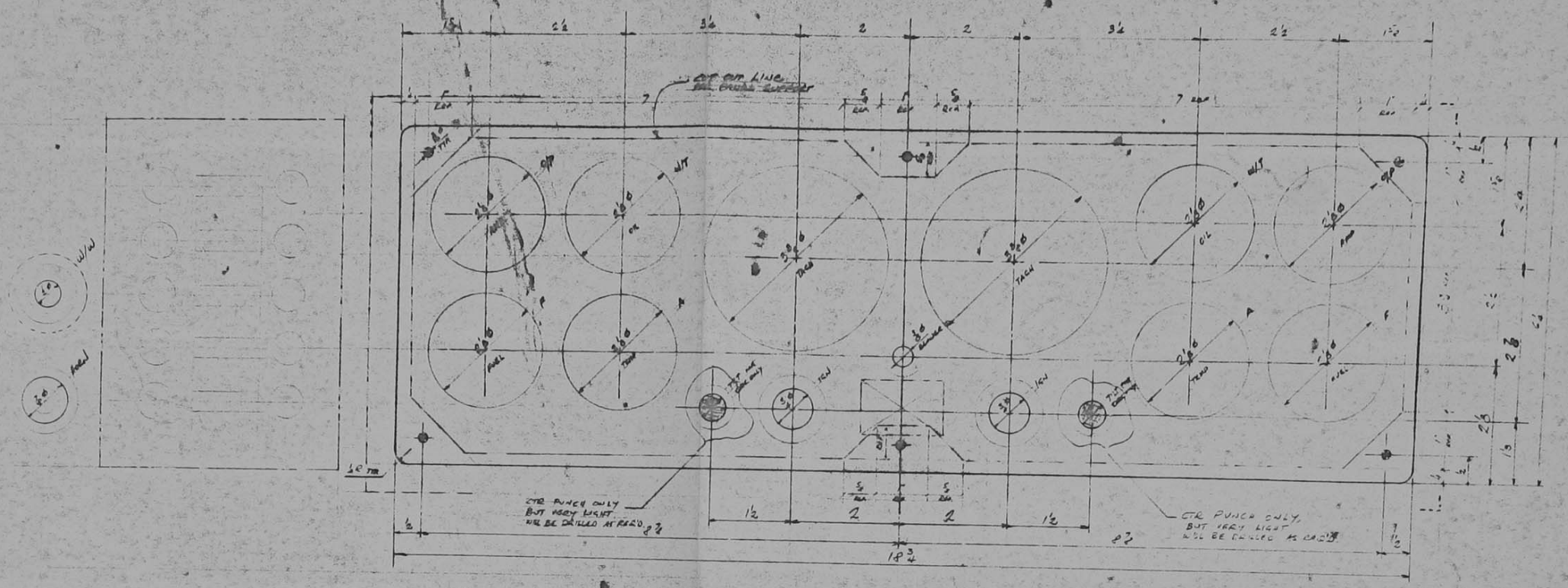
REV	DATE	DESCRIPTION	BY
1			
2			

SCALE	AS SHOWN	PROJECT	ALCAN PROJECT 57
DESIGNED BY	H.E. Luper	TITLE	HULL FOAMING ARRANGEMENT FOR PROJECT DEVELOPMENT
APPROVED BY	<i>[Signature]</i>	DATE	1/14/68
PROJECT	57-007	REV	1



A-03-095



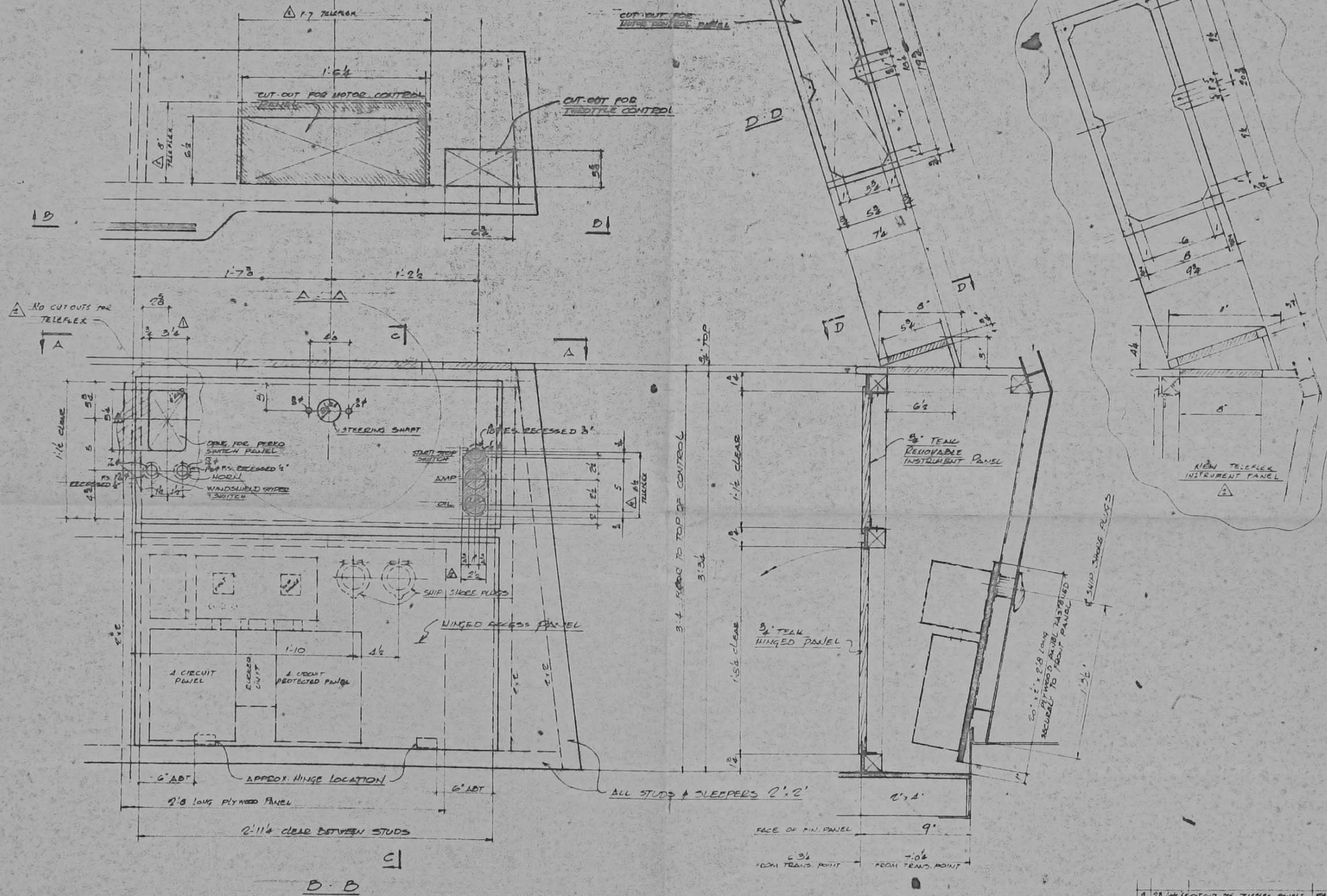


SCALE	1:1
DESIGNED BY	MSB E.S.E.
APPROVED	[Signature]
PROJECT NO.	1525-027
DATE	11-370
DESCRIPTION	ALCAN PROJECT 370 INSTRUMENT PANEL LAYOUT
BY	J.C.
REVISION	9/16/69 VOLVO DIESEL PANEL ADDED
FOR PROJECT DEVELOPMENT DIVISION	
ALCAN ALUMINUM COMPANY OF CANADA LTD.	
11-370-RO1	



BOAT WHEELHOUSE

WHEEL & CONTROL PANEL

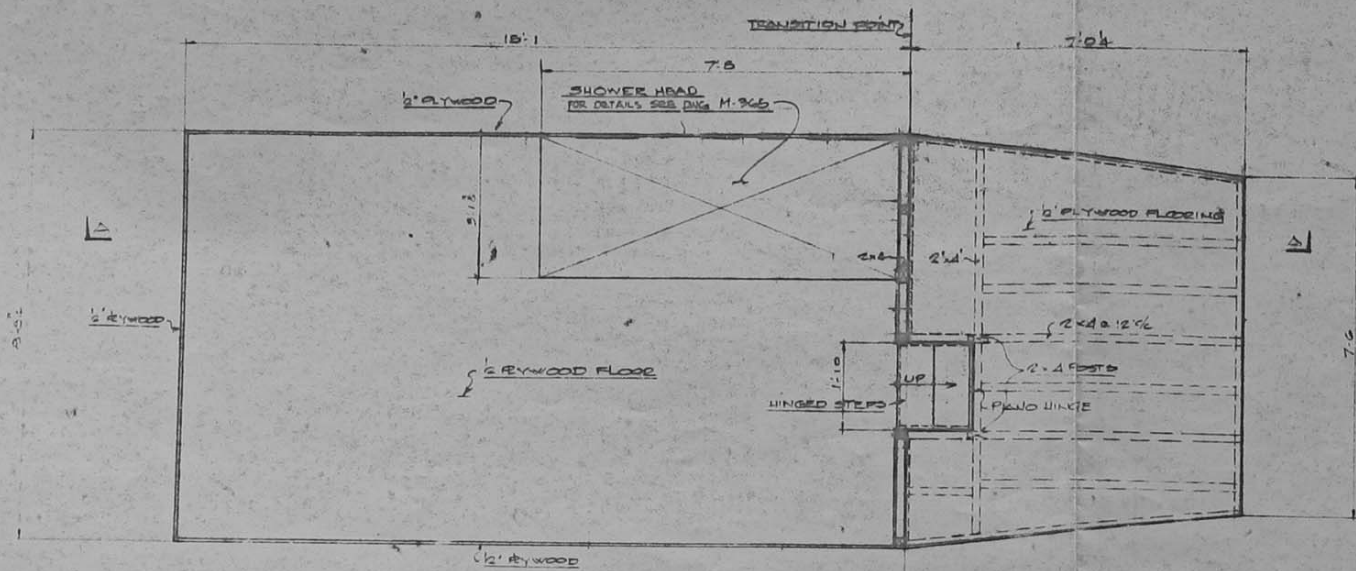


REV.	DATE	DESCRIPTION	BY
1		2 28 1/2" LONG AXIAL FASTENERS SECURED TO FRONT PANEL	
2		2 28 1/2" LONG AXIAL FASTENERS SECURED TO FRONT PANEL	
3		2 28 1/2" LONG AXIAL FASTENERS SECURED TO FRONT PANEL	

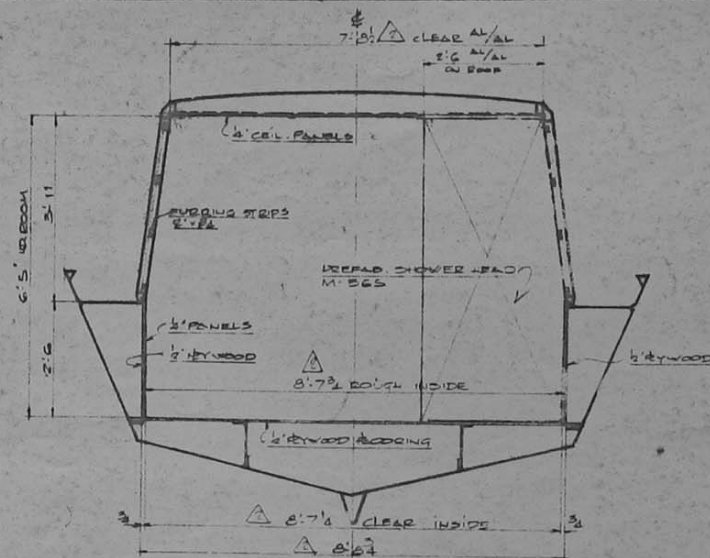
  

SCALE	FL	ALCAN PROJECT 376
DESIGNED BY	JF LUBERT	INSTRUMENT PANEL
DRAWN BY		LAYOUT & DETAILS
CHECKED BY		FOR PROJECT DEVELOPMENT DIV.
APPROVED	JAN 69	ALUMINUM COMPANY OF CANADA LTD. 69
		TRANSPORTATION AND STRUCTURES DIVISION
PROJECT NO.	1029-027	M 370 P01
		A-03-101

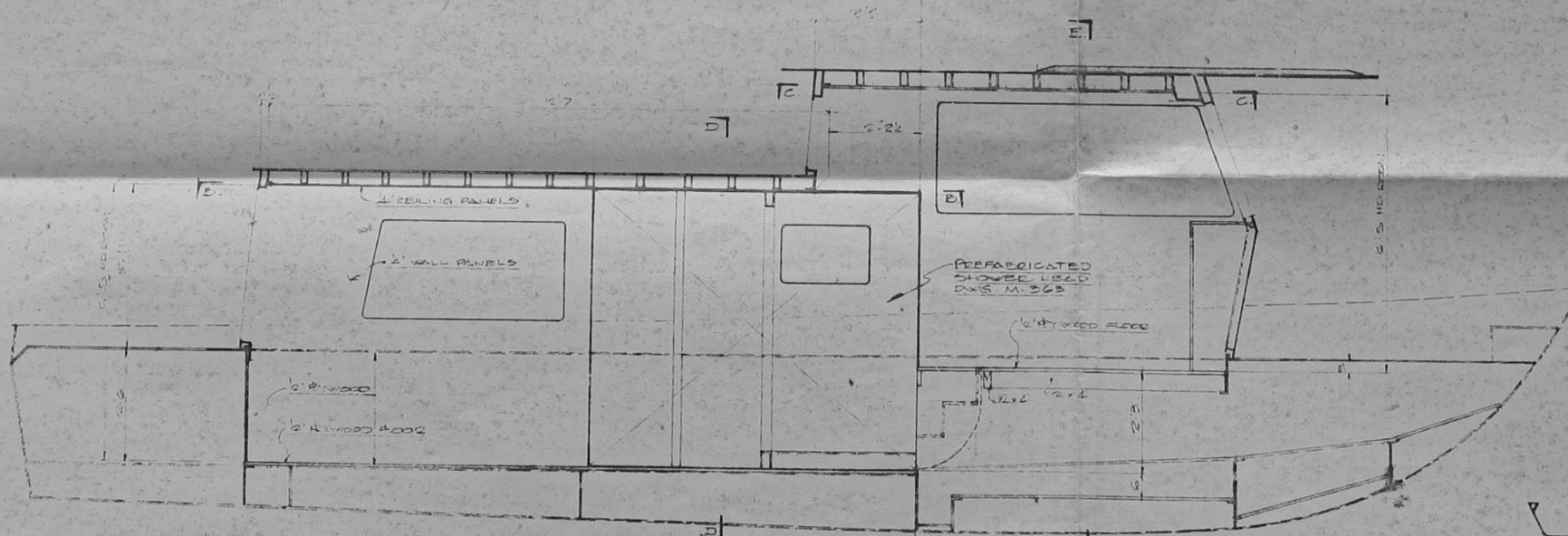




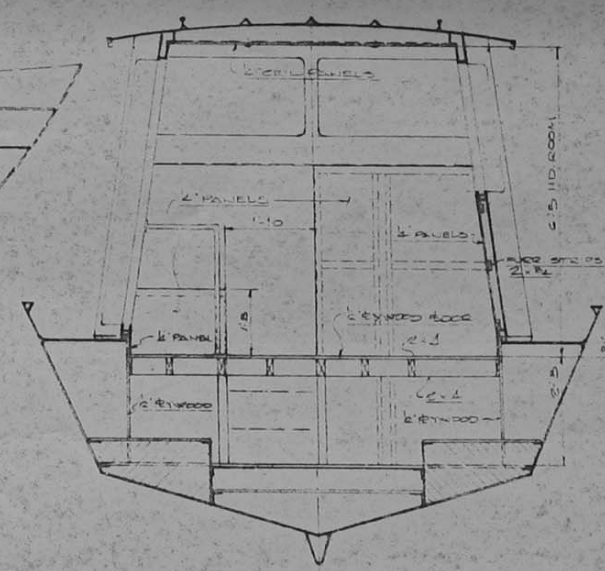
FLOOR PLAN



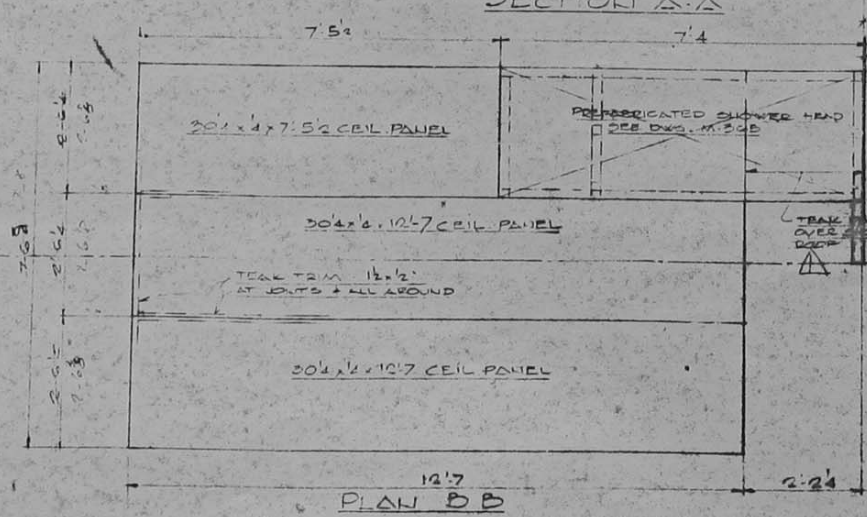
SECTION D-D



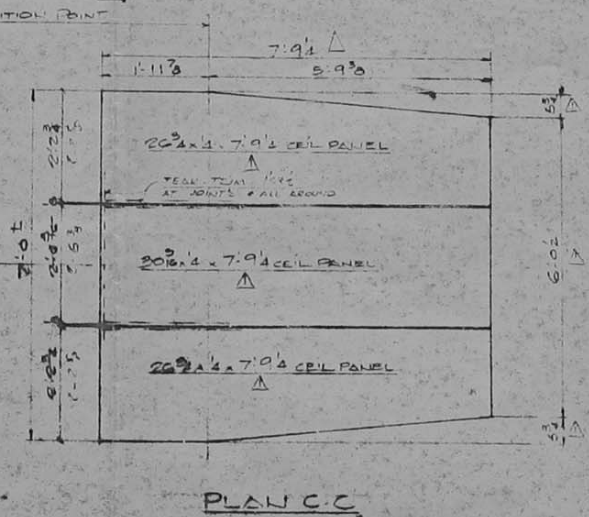
SECTION A-A



SECTION E-E



PLAN B-B



PLAN C-C

NO.	DATE	DESCRIPTION	BY
1	11/20/69	ISSUED FOR CONSTRUCTION	H.F. Lupton
2	12/10/69	REVISIONS	H.F. Lupton

SCALE: 1/8" = 1'-0"

APPROVED: *[Signature]* 1/14/69

PROJECT DEVELOPMENT DIV.

ALCAN PROJECT 370 INTERIOR LAYOUT

ALUMINUM COMPANY OF CANADA LTD.

MANUFACTURED BY: ALUMINUM COMPANY OF CANADA LTD.

INITIALS: M-312 R22

1505007

R-03-087

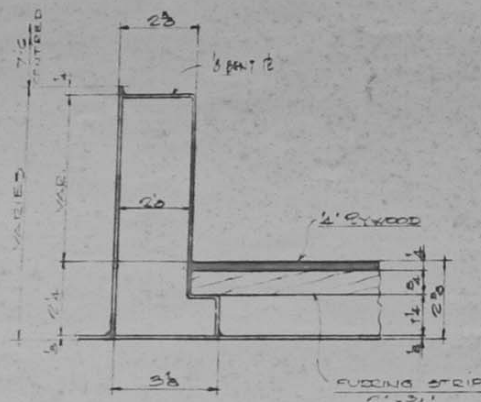




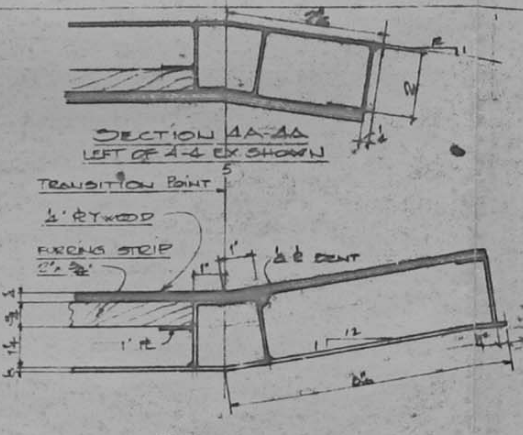




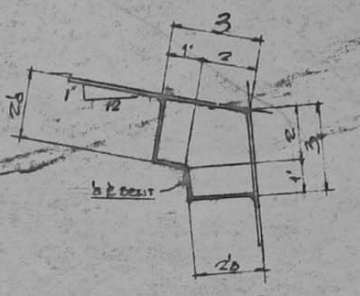




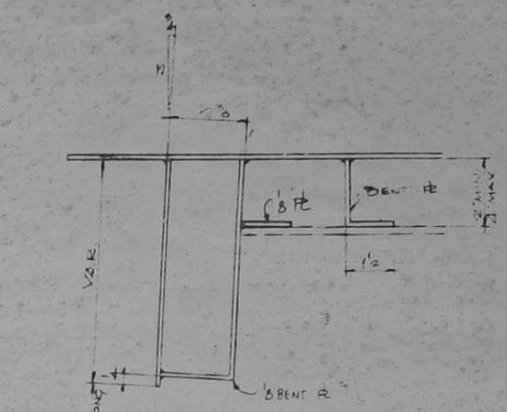
SECTION 1-1



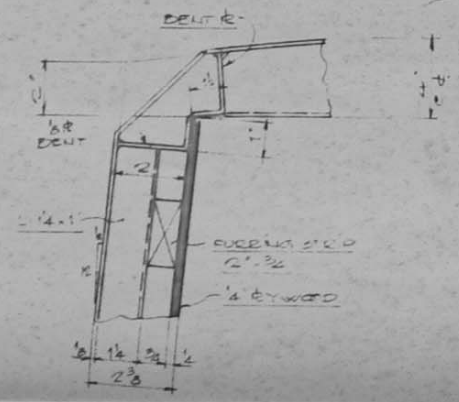
SECTION 4-4



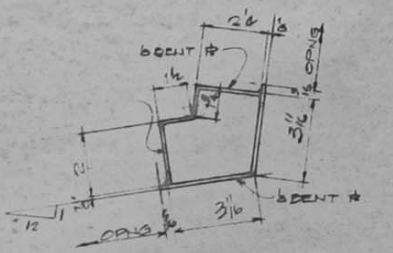
SECTION 6A-6A



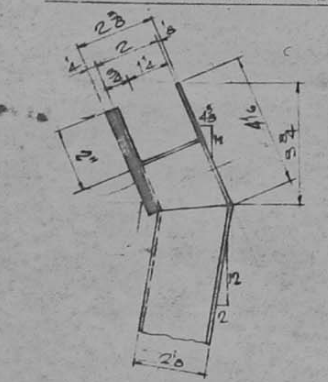
SECTION 10-10  
AT CENTRE LINE



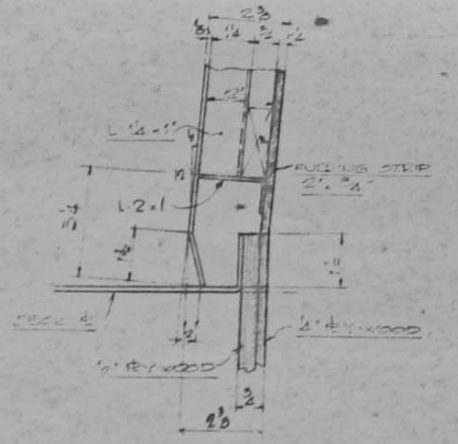
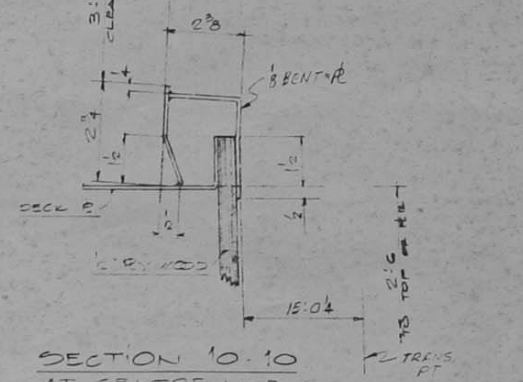
SECTION 2-2



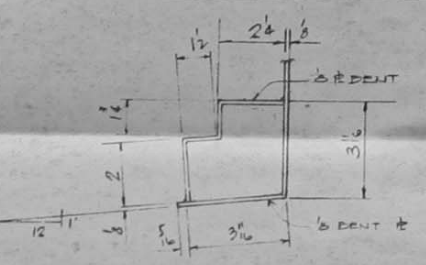
SECTION 5-5  
SECT. 5A-5A OPP. HAND



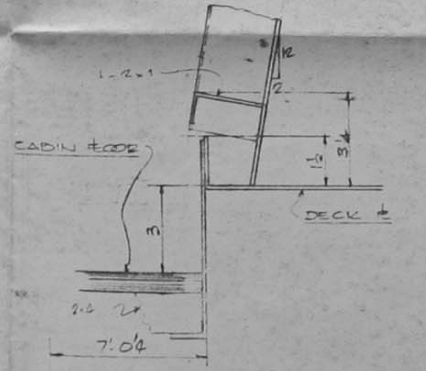
SECTION 8-8



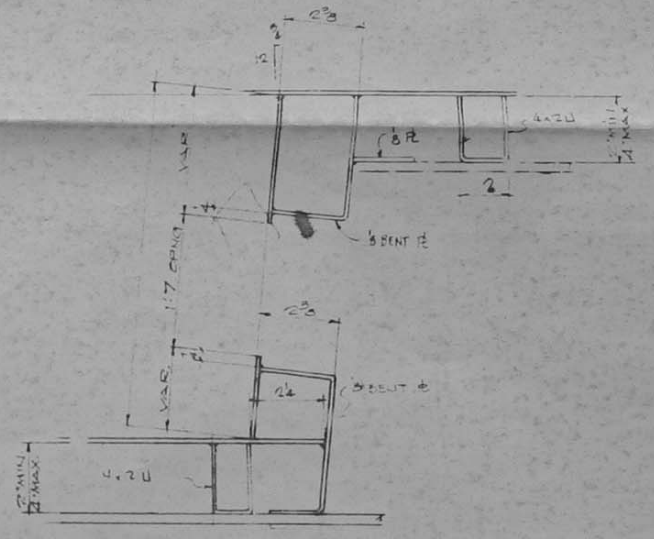
SECTION 3-3



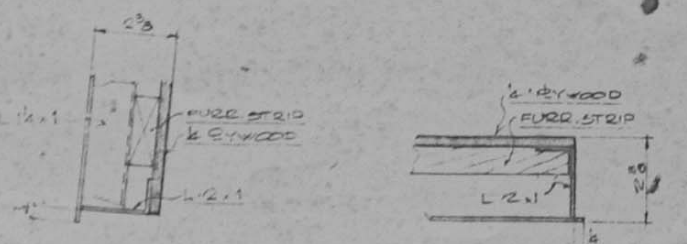
SECTION 6-6



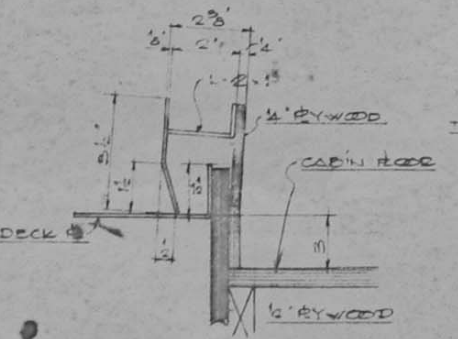
SECTION 9-9



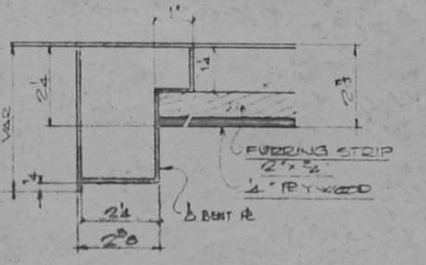
SECTION 11-11



HEAD JAMB  
TYPICAL WINDOW SECT. C AFT CABIN



SECTION 7-7



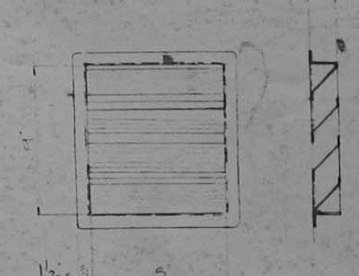
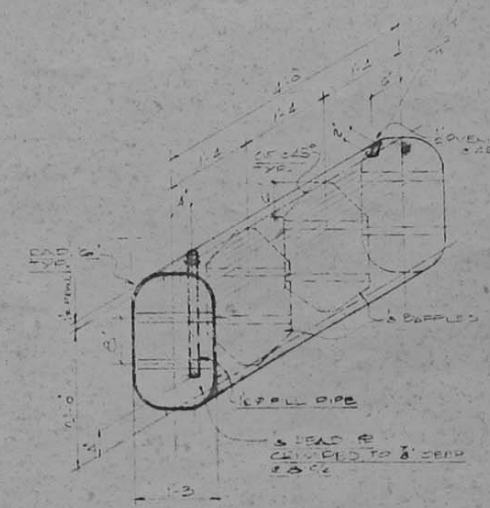
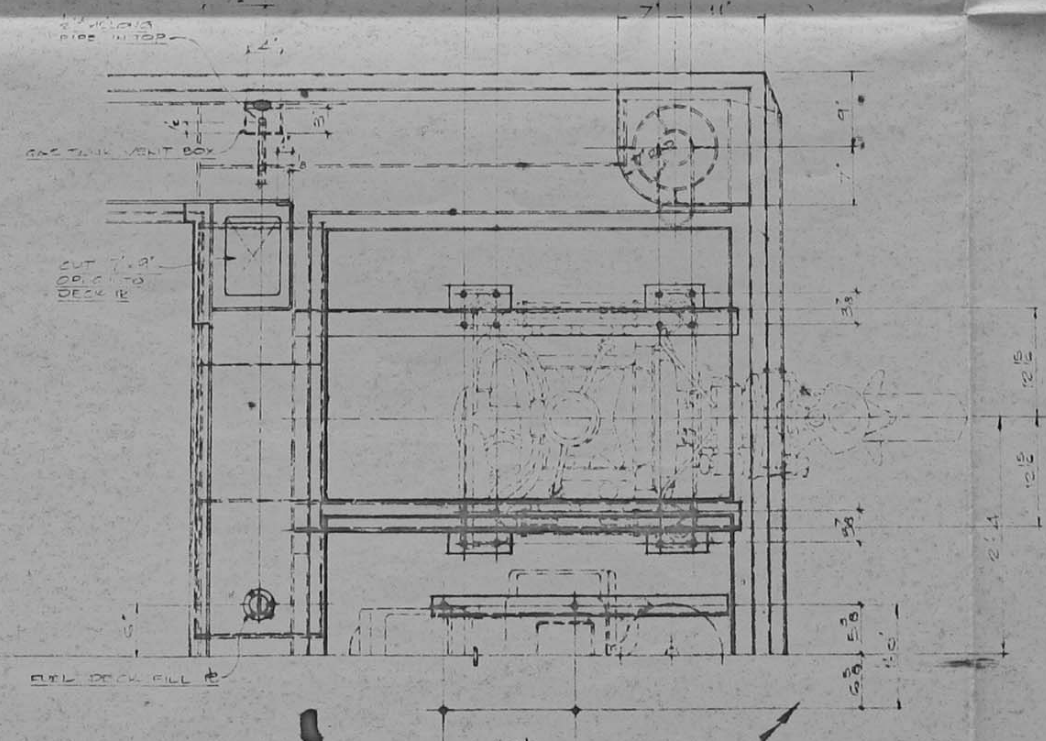
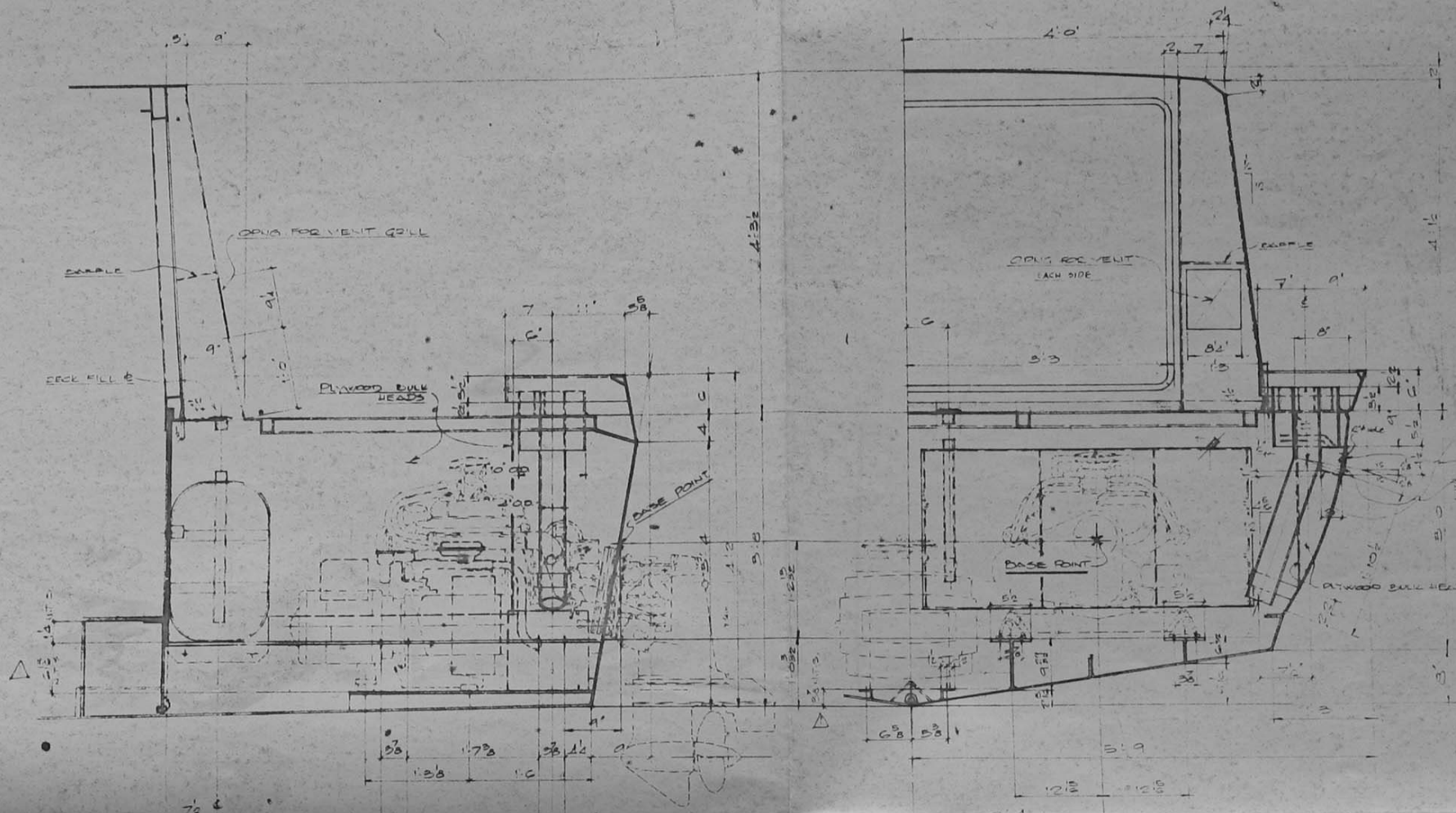
SECTION 12-12

SCALE	ALCAN PROJECT 370 MISCELLANEOUS DETAILS PROJECT DEVELOPMENT DIVISION ALUMINUM COMPANY OF CANADA LTD. TRANSPORTATION AND STRUCTURES DIVISION MONTREAL, QUEBEC
DESIGNED BY	
CHECKED BY	
APPROVED BY	
PROJECT NUMBER	
PROJECT 1525.027	M 307 R A-03-079









TYP. VENT LOUVE  
 2-REQD - BACK  
 SAME DETAILS AS LOUVER DWG M-313

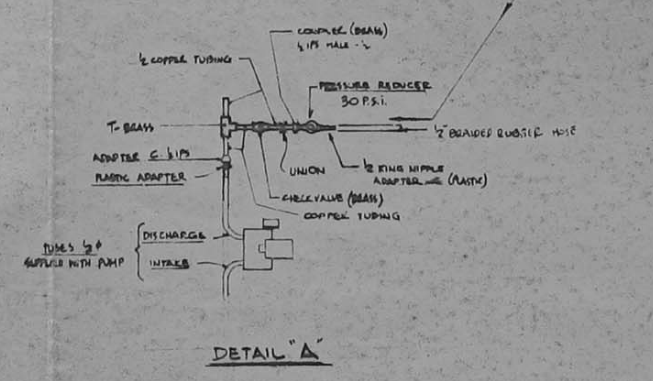
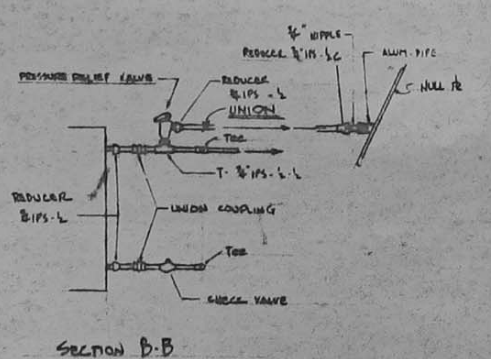
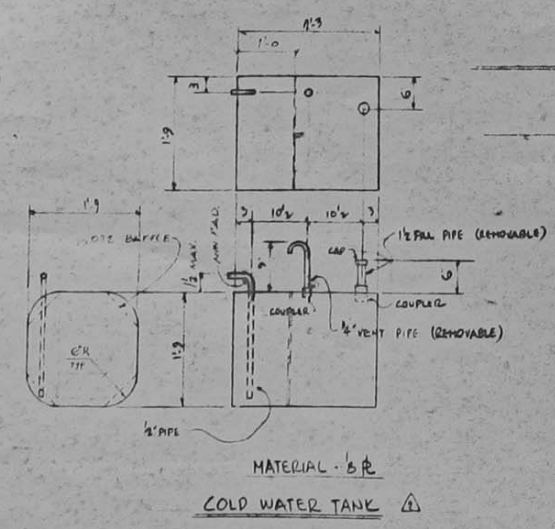
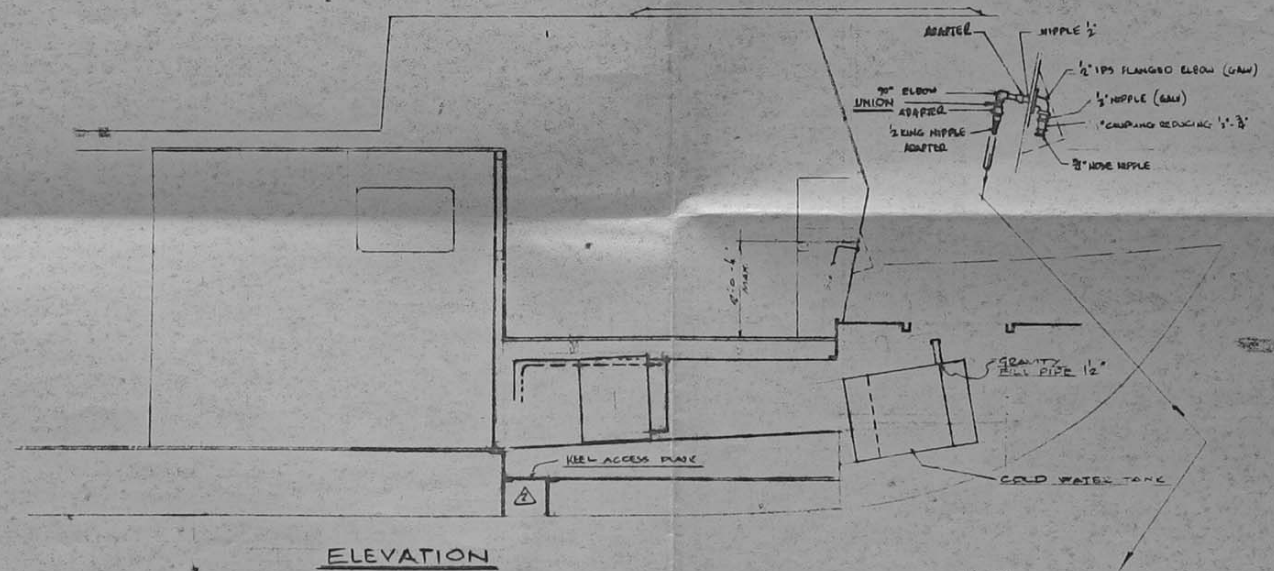
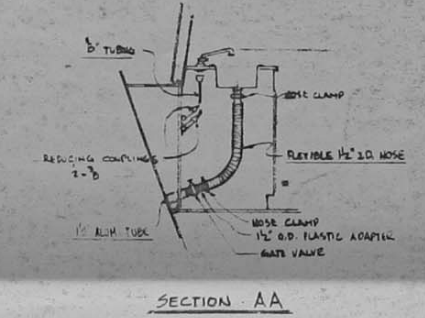
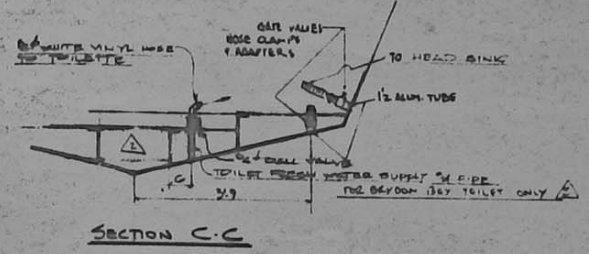
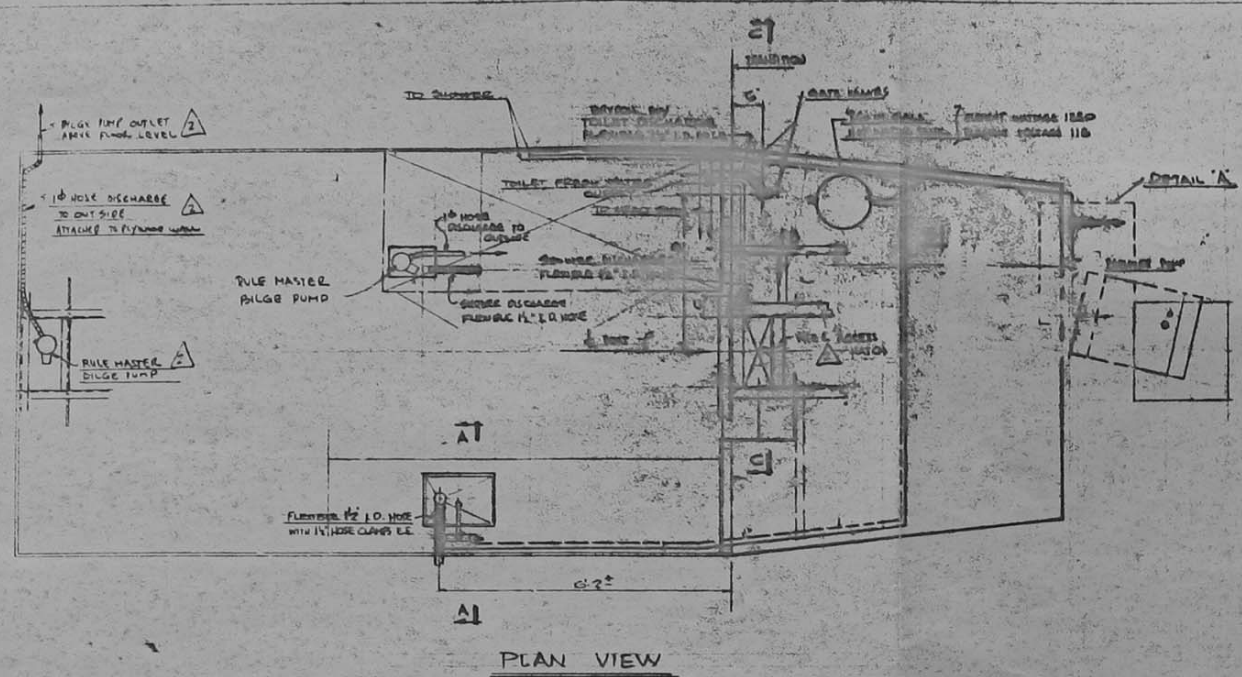
NOTE - GEN MOUNTING BRGS  
 NOT SYMM ABT & POST

ALL DETAILS SYMM ABT & OF BOAT  
 EXCEPT GENERATOR MOUNTINGS

SCALE	1/2" = 1'-0"	ALCAN PROJECT 270
DESIGNED BY	J.F. Liper	MOTOR COMPART. DETAILS
CHECKED BY		GEN. MOTOR INSTALLATION
APPROVED BY	J. J. Liper	PROJECT DEVELOPMENT DIV.
DATE	DEC 68	
		ALUMINUM COMPANY OF CANADA LTD
		TRANSPO. CARGO AND STRUCTURES DIVISION
PROJECT NO.	11525 027	REV. NO.
DATE	DEC 68	BY
SCALE	M 3/4"	RD

A-03-092





**NOTES**  
 ALL PIPING SHOULD BE RUN ON STRUCTURE AND SHOULD BE SECURED WITH APPROPRIATE STRAPS, HANGERS AND CLIPS TO HOLD THEM SECURELY AGAINST VIBRATION AND CHANGING HEAT. HEATER SHOULD BE INSTALLED WITH SUITABLE CHOCKS AND ROLD DOWNS.

REV	DATE	DESCRIPTION	BY
1		REVISED	
2		REVISION	
3			

SCALE: \_\_\_\_\_

DESIGNED BY: JAMES CARDINAL

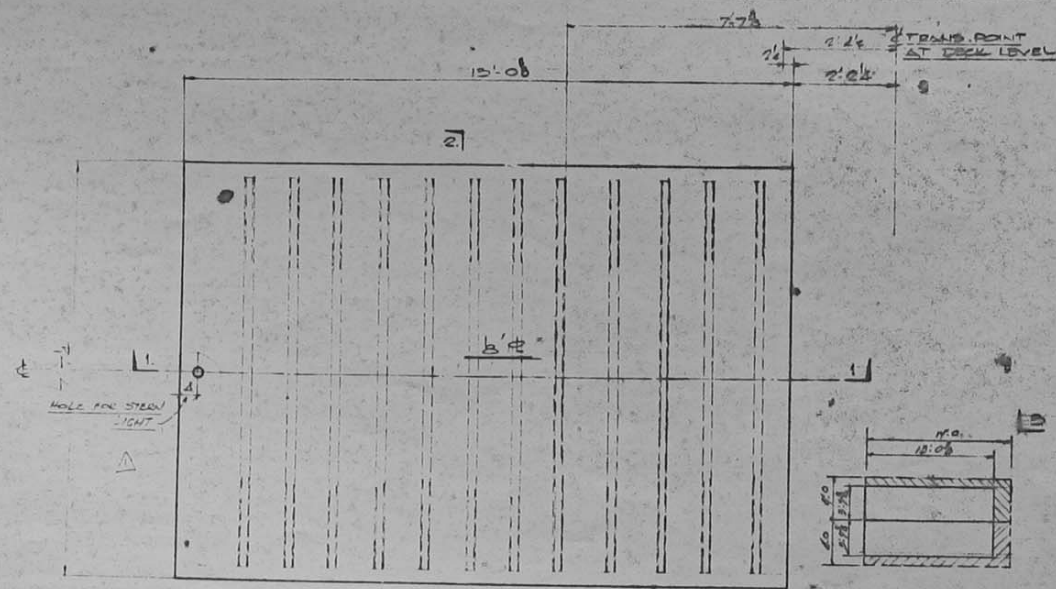
PROJECT: ALCAN PROJECT 370 - PLUMBING SYSTEM

APPROVED: \_\_\_\_\_

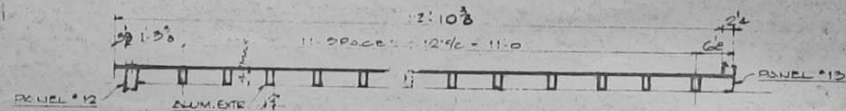
PROJECT NO: M-310 R02

A-03-089

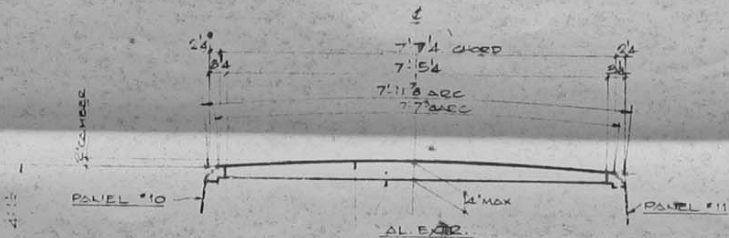




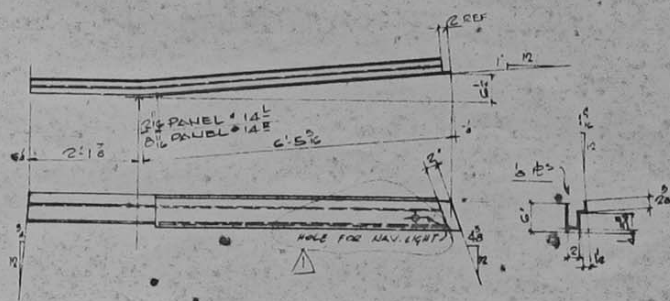
PLAN OF AFT CABIN ROOF



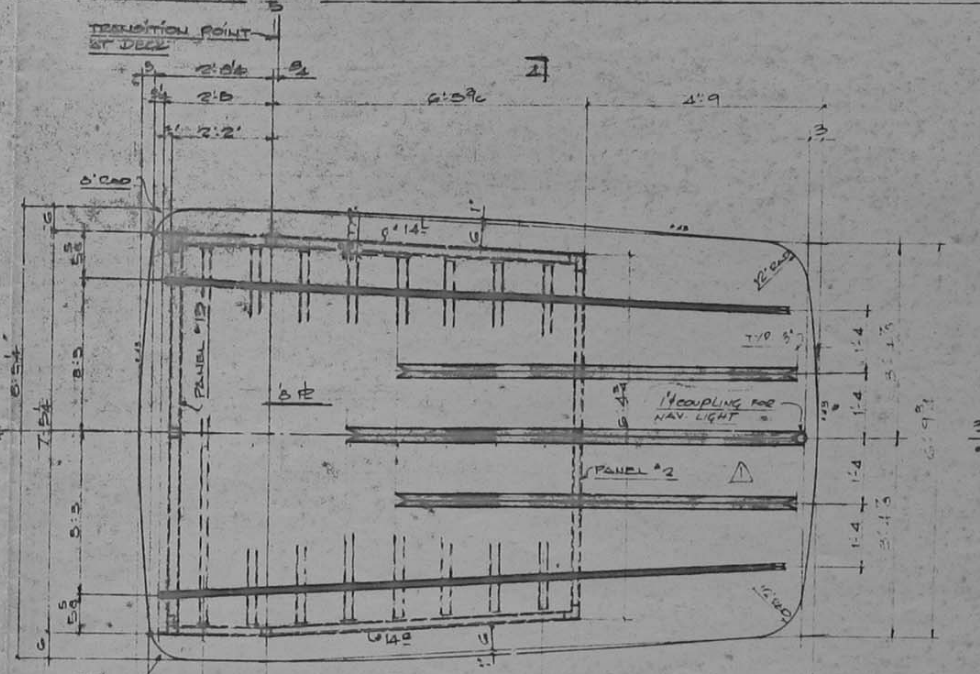
SECT. 1-1



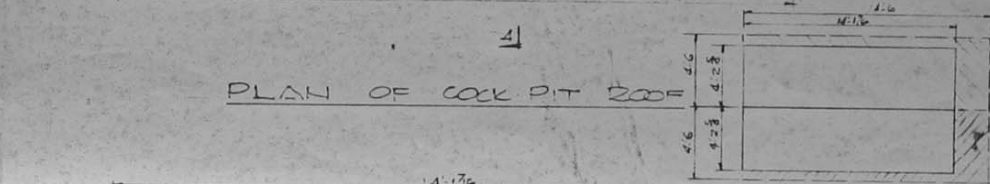
SECT. 2-2



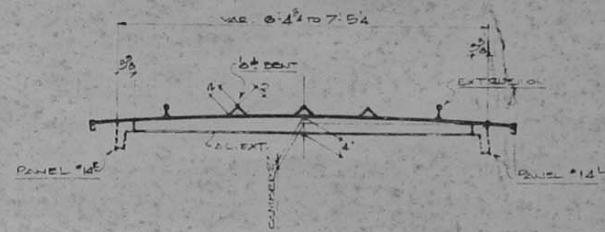
ONE PANEL #14<sup>E</sup> RIGHT  
ONE PANEL #14<sup>E</sup> LEFT AS NOTED



PLAN OF COCK PIT ROOF



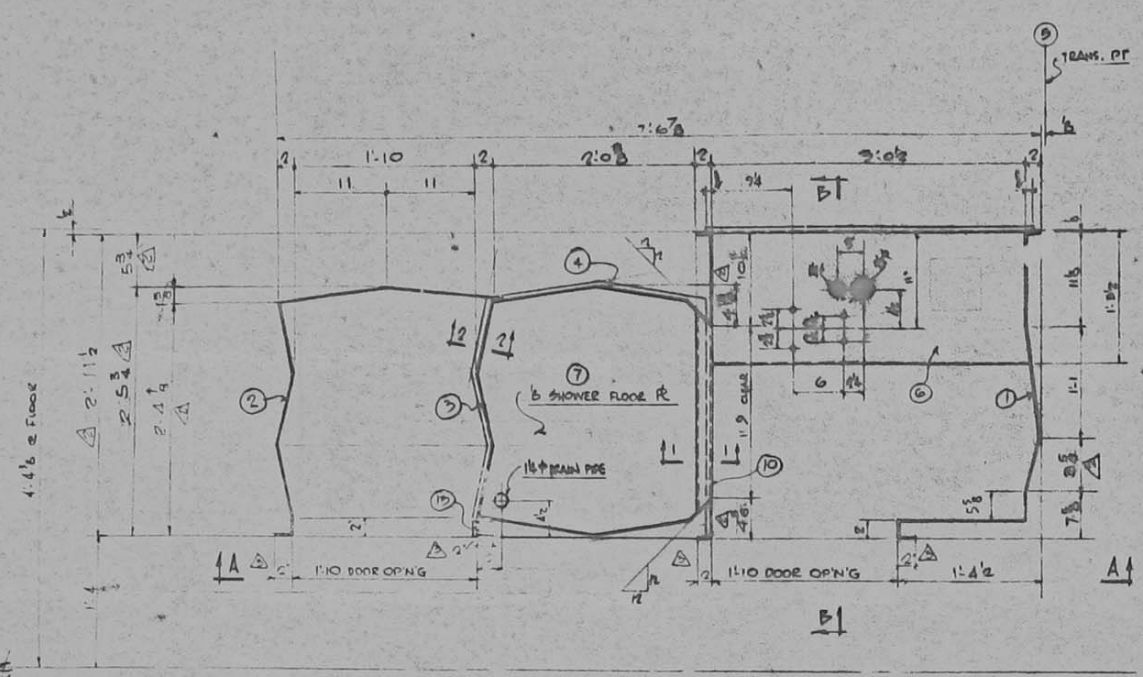
SECTION 3-3



SECTION 4-4

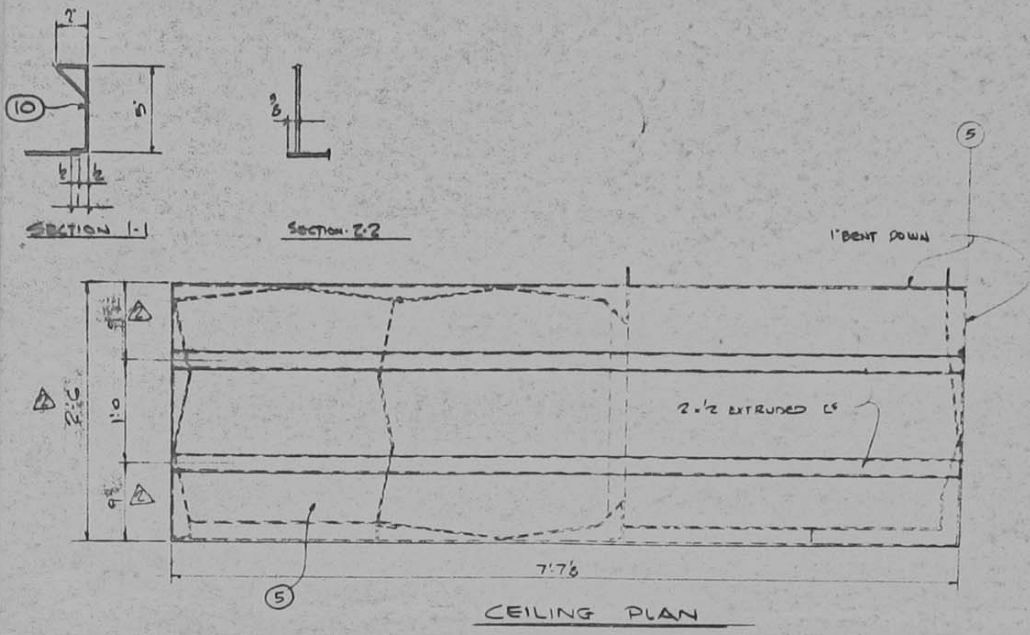
SCALE	N.S.B.	ALCAN PROJECT 370
DESIGNED BY	A. J. Cooper	ROOF DETAILS
CHECKED BY		PROJECT DEVELOPMENT DIV.
APPROVED BY	M. J. Blythe	ALUMINUM COMPANY OF CANADA LTD. 69
DATE	1865-027	M. 312-901





FLOOR PLAN

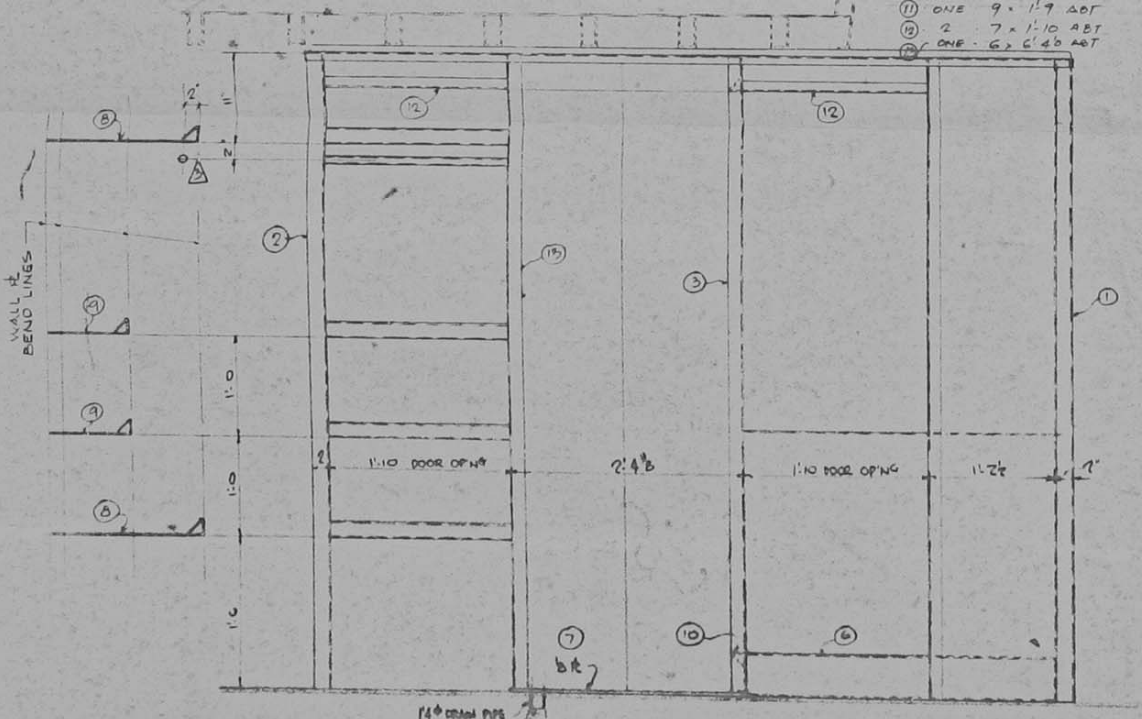
- .072' SHEET**
- ① - ONE - 55 x 6'46 ABT
  - ② - ONE - 57 x 6'46 ABT
  - ③ - ONE - 64 x 6'46 ABT
  - ④ - ONE - 42 x 6'46 ABT
  - ⑤ - ONE - 52 x 7'98 ABT
  - ⑥ - 2 - 24 x 2'2 ABT
  - ⑦ - 2 - 15 x 2'2 ABT
  - ⑧ - ONE - 12 x 2'1 ABT
  - ⑨ - ONE - 9 x 1'9 ABT
  - ⑩ - 2 - 7 x 1'10 ABT
  - ⑪ - ONE - 6 x 6'40 ABT



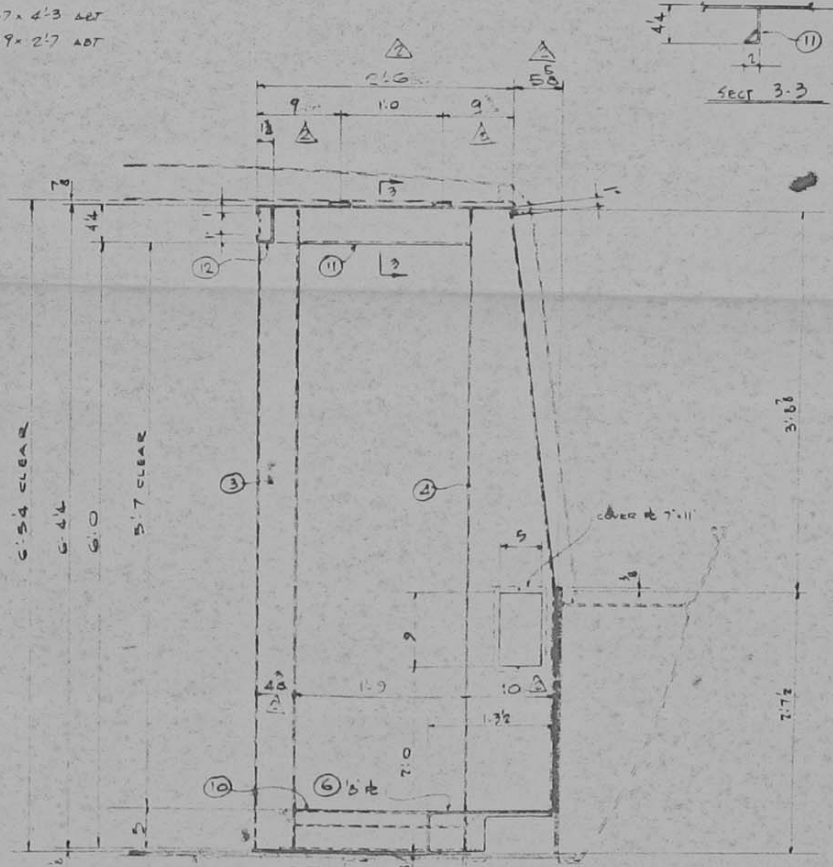
CEILING PLAN

ALL FORMED SHEETS (EXC NOTED) TO BE OF .072 MT'L

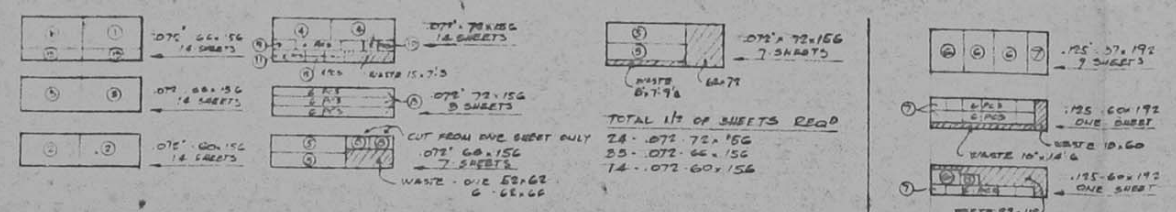
- .125' SHEET**
- ⑫ - ONE - 37 x 4'3 ABT
  - ⑬ - ONE - 29 x 2'7 ABT



ELEVATION AA



SECTION BB



TOTAL 117 OF SHEETS REQ'D  
 9 - .125 37x192  
 2 - .125 29x192

ALL QUANTITIES SHOWN ARE FOR 28 UNITS

REV	DATE	DESCRIPTION	BY
1	JAN 1989	NEW DWG - PREVIOUS DWG CANCELLED	JL
2	JAN 1989	GEN REVISION	JR
3	JAN 1989	CUTTING PARTS ADDED CANT HANGER MOVED 45" DIA HOOD CANT ADDED	JPL

SCALE: 1/4" = 1'-0"

DESIGNED BY: J. CARDINAL

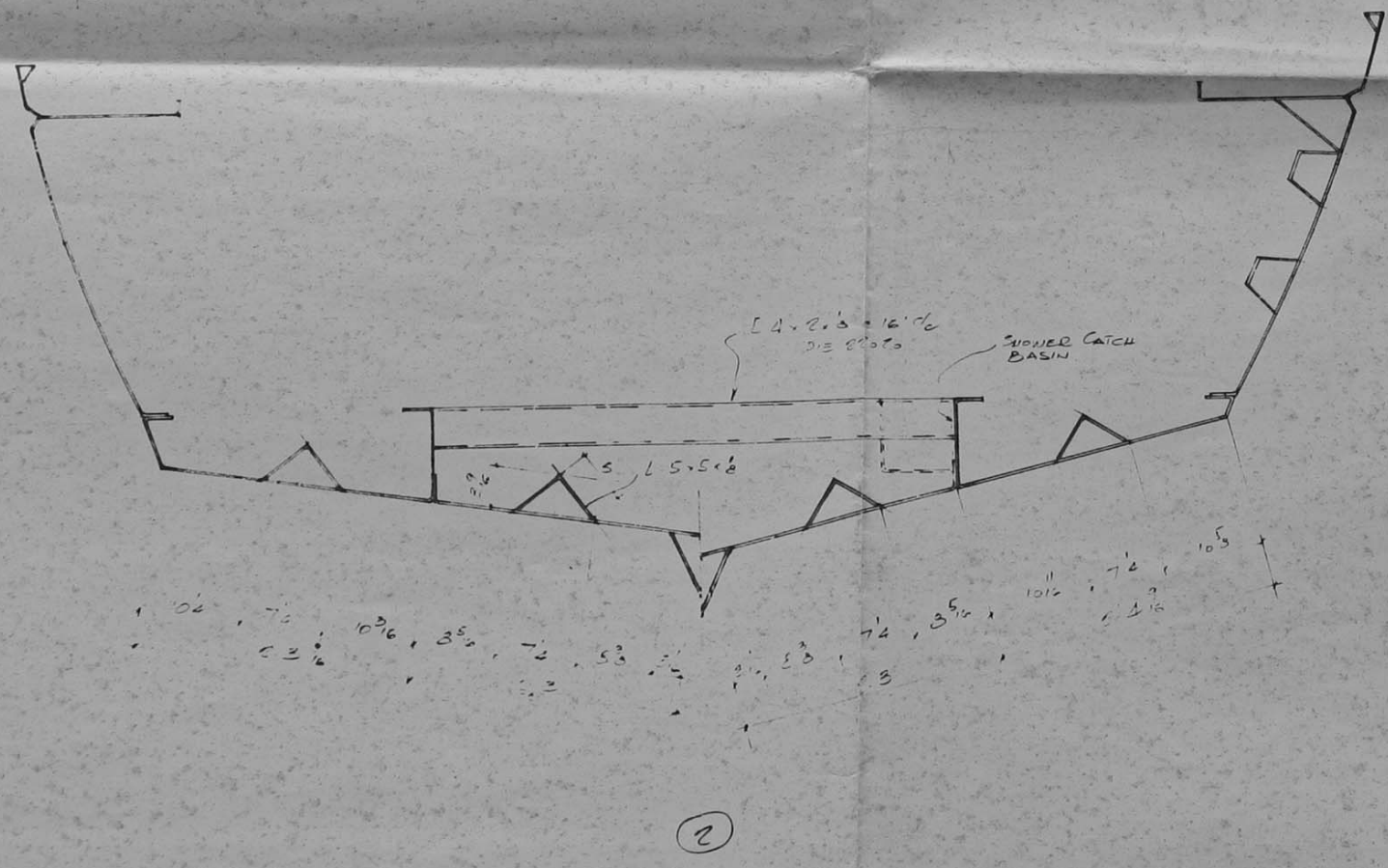
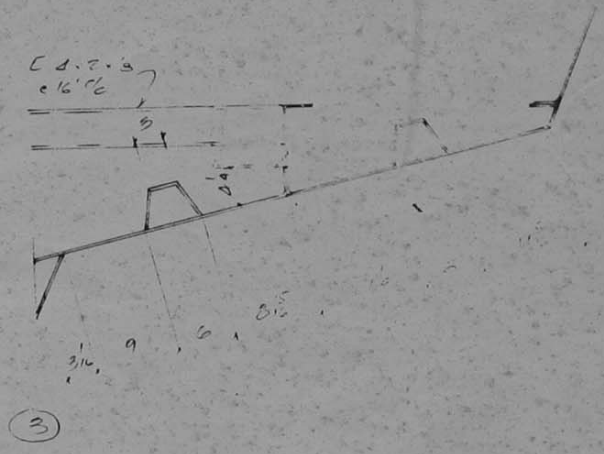
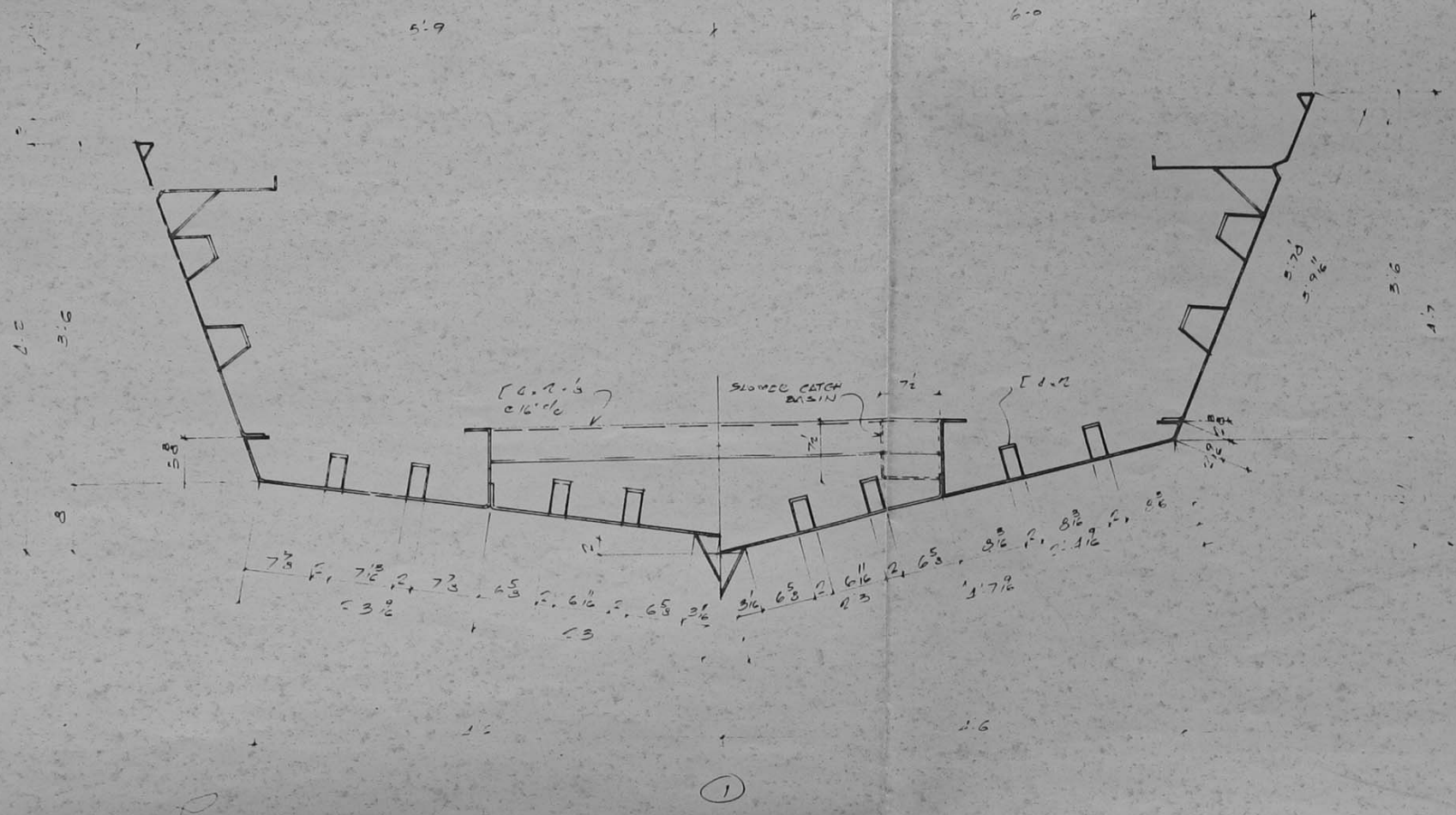
PROJECT: ALCAN PROJECT 370 SHOWER HEAD DETAILS

PROJECT DEVELOPMENT DIVISION

ALCAN ALUMINUM COMPANY OF CANADA LTD

15025-027 JUN 89 K-365 R-03-096





11/21/370  
 SUGGESTED HULL ENTRY POINT  
 ALTERNATIVES

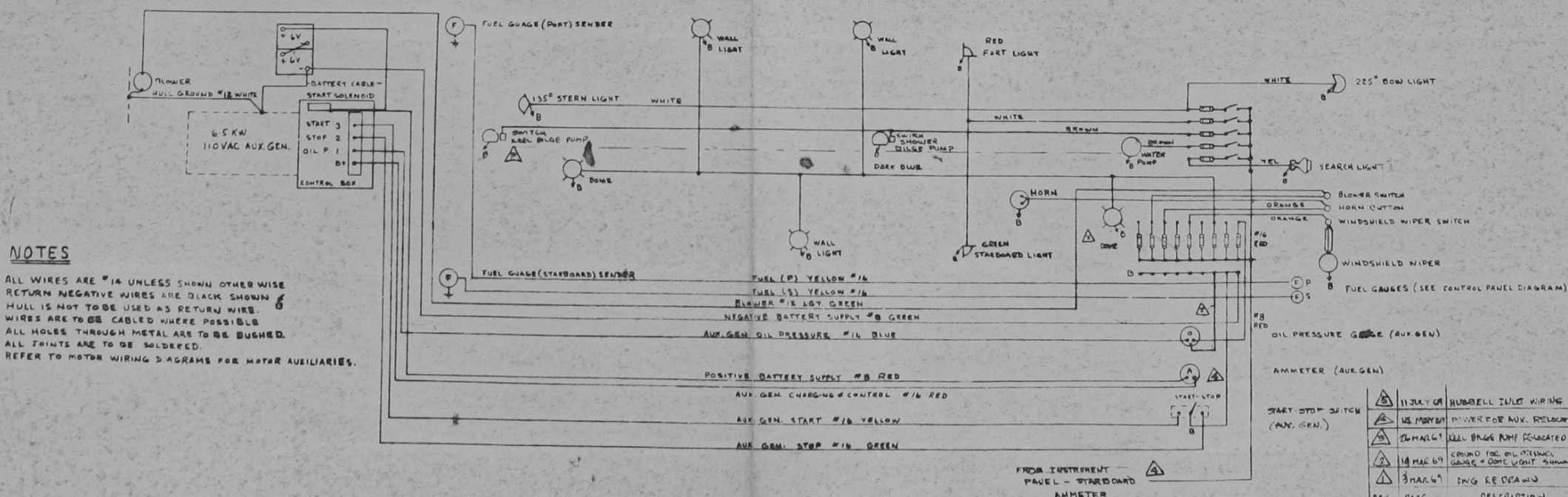
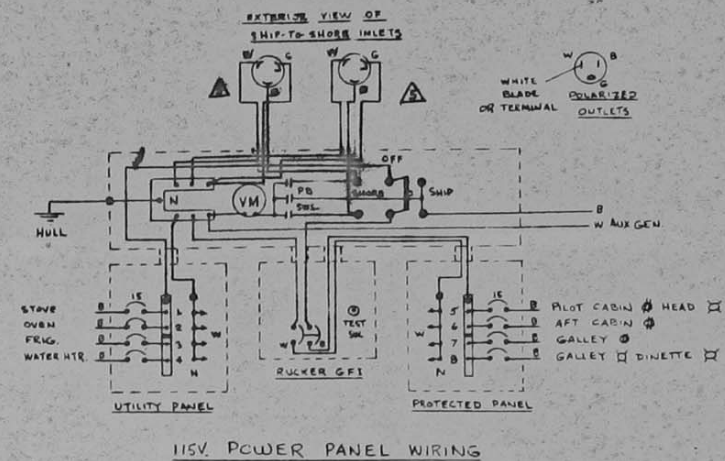
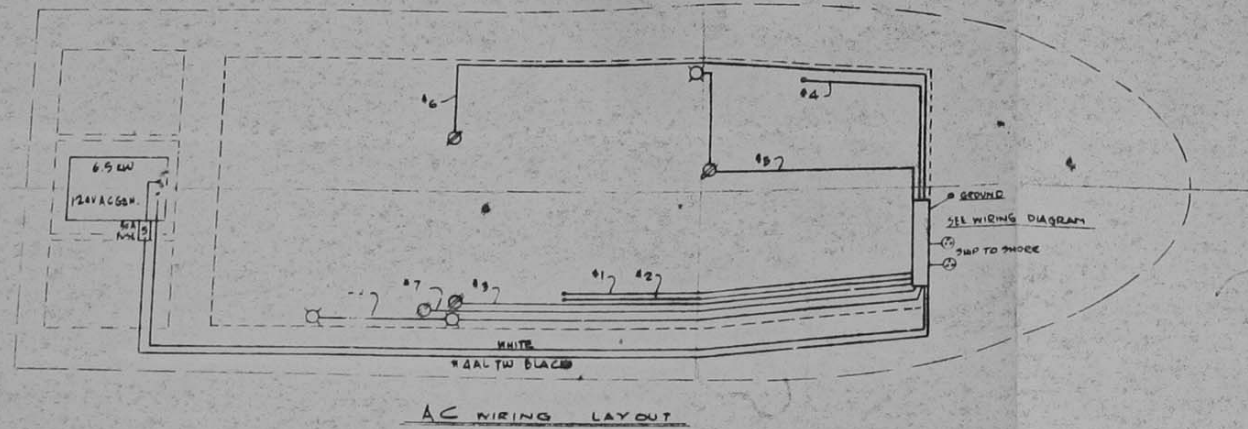












- NOTES**
1. ALL WIRES ARE #14 UNLESS SHOWN OTHERWISE
  2. RETURN NEGATIVE WIRES ARE BLACK SHOWN
  3. HULL IS NOT TO BE USED AS RETURN WIRE
  4. WIRES ARE TO BE CABLED WHERE POSSIBLE
  5. ALL HOLES THROUGH METAL ARE TO BE BUSHED.
  6. ALL JOINTS ARE TO BE SOLDERED.
  7. REFER TO MOTOR WIRING DIAGRAMS FOR MOTOR AUXILIARIES.

**12 VOLT D.C. WIRING DIAGRAM**

REV	DATE	DESCRIPTION	BY
1	11 JULY 68	HUBBELL INLET WIRING	AU
2	12 FEBRUARY 69	POWER FOR AUX. RELOCATED	A
3	26 MARCH 69	HEEL BRIDGE PUMP RELOCATED	AC
4	18 MAY 69	GROUND FOR OIL PRESSURE GAUGE & DOME LIGHT SHOWN	CC
5	3 MAY 69	ENG REPAIR	CC

SCALE	ALCAN PROJECT 370	
DESIGNED BY	WIRING LAYOUTS	
CHECKED BY	PROJ. DEV. DIVISION	
APPROVED BY	ALUMINUM COMPANY OF CANADA LTD.	
PROJECT NUMBER	TRANSPORTATION AND STRUCTURE PROGRAM	
DATE	MAY 1968	
REV	A-03-098	