

alcan news

February 1969



Highlights

It was with some reservations, as editor, that I chose the February issue to show you sun and boats; especially since I have just returned from an extended stay in the Saguenay — extended by a blizzard which forced the closing of the airport. To ease my conscience, may I suggest that the worst of the winter is past. Also, if you look only at the pages of this issue, you may, for a few moments, forget that your driveway probably needs 'shoveling-out' when you get home tonight.

* * *

The Petrel SB-12, shown on page 5 of this issue, will be used exclusively at the National Boy Scout Sailing Regatta to be held late in August on Valois Bay off Pointe Claire, Quebec. The Boy Scouts will be the first to sail this fast new Petrel class boat in competition and, no doubt, sailors from across Canada and other countries will be there watching and assessing its performance.

* * *

Dana T. Bartholomew, executive vice-president, finance, Alcan Aluminium Limited, recently made an optimistic forecast for the year 1969. In his outlook for free-world consumption of aluminum, Mr. Bartholomew predicted a growth rate of about 7%. He also suggested, if all announced new industry facilities materialize, that an annual growth rate of 10% could be achieved over the next three years. Commenting on new uses for aluminum, Mr. Bartholomew said "The most exciting new industry application for aluminum is containerization — the use of large aluminum containers for bulk ocean and rail shipment of commodities. This application is in its infancy, and promises to be an extremely important consumer of the lightweight metal".

Alcan Sales Offices

Aurora, 95 Dunning Ave., 416/727-4238 (Extrusions)
(Direct line Toronto 416/924-8751)
Calgary, 717 - 7th Ave., 403/262-6106
Laval, 2,000 Fortin Blvd., 514/667-8330 (Extrusions)
Montreal, 1 Place Ville Marie, 514/877-2340
Ottawa, 801 Royal Trust Bldg., 613/233-8474
Quebec, 500 E. Grande-Allée, 418/522-1568
Rexdale, 24 Haas Road, 416/244-4275 (Foil Products)
Richmond, B.C. 1260 Vulcan Way, 604/273-3881
Toronto, 200 University Ave., 416/362-5599
Winnipeg, 360 Broadway Ave., 204/943-5561

Alcan Building Products Limited

Calgary, 3824 7th St. S.E., 403/287-1100
Montreal, 1395 Mazurette St., 514/384-0490
Toronto, 768 Warden Ave., 416/751-6200
Vancouver, 340 W. 2nd Ave., 604/879-4535

Alcan Design Homes Limited

Calgary, 7335 Flint Road S.E., 403/255-4431
Edmonton, 74 Fairway Dr., 403/434-8437
Montreal, 1 Place Ville Marie, 514/877-2340
Toronto, 772 Warden Ave., 416/751-6711
West Vancouver, 5 - 1425 Marine Dr., 604/922-9184
Woodstock, P.O. Box 200, 519/537-5541

Distributors of Alcan Aluminum

Atlas Alloys

Edmonton, 7945 Coronet Road, 403/469-0402
Montreal, 300 Montée de Liesse, 514/748-7941
Toronto, P.O. Box 8900, Terminal A, 416/368-7811
Vancouver, 3530 Vanness Ave., 604/437-3731
Windsor, 3030 Walker Road, 519/966-1180
Winnipeg, 1424 Willson Place, 204/284-4480

Drummond McCall & Co. Limited

Calgary, 3628 Burnsland Road, 403-/243-5798
Halifax, Lakeside Industrial Park, 902/876-2368
Hamilton, Nash Road North, 416/549-1371
Montreal, 5205 Fairway, Lachine, 514/631-4861
Quebec, 845 St. Cyrille Street W., 418/683-3662
Toronto, 1100 Caledonia Road, 416/781-1551
Vancouver, 119 West Pender, 604/683-5050
Winnipeg, 1450 Saskatchewan, 204/772-0321

Wilkinson Company Limited

Calgary, 6909 Farrell Road, S.E., 403/252-1101
Edmonton, 9525 - 60th Ave., 403/433-9431
Saskatoon, 2325 McKee Avenue, 306/653-3551
Vancouver, 888 S.E. Marine Drive, 604/321-1231

Metals & Alloys Co. Ltd. (Foundry Ingot)

Montreal, 1611 Bercy Street, 514/526-2561
Toronto, 195 Wicksteed Ave., 416/421-5771
Winnipeg, 1457 Chevrier Blvd., 204/474-2407

Alcan News is published monthly by the Advertising Services Department of the Aluminum Company of Canada, Ltd, Box 6090, Montreal 101, Canada, as a continuing source of information about developments in the aluminum industry.

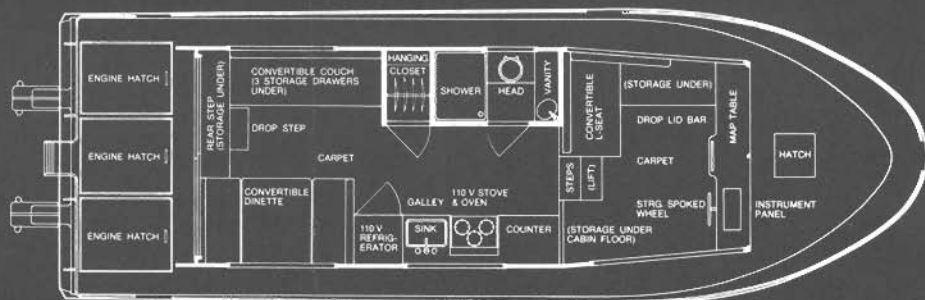
Unless otherwise indicated, permission to reproduce material from Alcan News is not necessary but a credit-line and letter of intent would be appreciated. Prints of photographs appearing in Alcan News and additional information will be supplied to publications on request. Alcan News is authorized as second class mail and for payment of postage in cash by the Post Office Department, Ottawa. Postage paid at Montreal.

Editor: George Bailey

Design: Alcan Graphics Services



A HOME AFLOAT



The ALCAN 370, shown on the cover, is an exciting concept in boat design. It combines the lively performance of a cruiser with the luxury of a floating family home, and is designed to sleep six adults in complete comfort.

Competitively priced with similar size boats, the Alcan 370 provides pride of ownership plus satisfaction derived from knowing real value. Thirty-seven feet long with a twelve foot beam, the boat is extremely manoeuvrable and, when powered by twin 155 horse power engines, has a speed of 25 miles per hour.

The hull, decks and deckhouse are built of heavy gauge marine aluminum that is tough, strongly resistant to corrosion and virtually maintenance free.

The all-welded hull is a cruiser-type modified 'V' and is designed to make use of the torsion box principle, absorbing and funnelling impact shock. It is insulated with foamed-in-place polyurethane which, as well as providing a flotation safety of almost 10,000 lb, dampens engine noise.

Inside, the ALCAN 370 is luxury throughout, with hand-crafted teak panelling trimmed with anodized aluminum and natural teak, full carpeting, bright colorful window curtains, and nylon-upholstered couches. A combined chart shelf and bar is mounted on the pilot cabin front wall. Adjacent to the spacious dinette is a nine-foot galley with Arborite or Formica top comprising a 4.6 cubic-foot under-counter refrigerator (110V), a three-burner electric range with oven (110V), a stainless steel sink, and wall-mounted and under-counter cabinets. The head is equipped with a shower (hot and cold running water). Electricity is supplied by a 6.5 kw generator and there are two lighting circuits (110V and 12V), and 110V Duplex outlets. The marine type windows have a heavy anodic coating for lasting beauty, are weatherstripped, and come complete with slide screens.

An important feature is the deckhouse insulation which allows the boat to be used from early spring to late fall.

Specifications

Length (Overall)		36'- 7"
Height (Overall)		11'- 3"
Beam		11'-10"
Freeboard Forward		4'- 6"
Aft		2'- 6"
Transom		
	Height from Waterline	2'- 6"
	Width	11'-10"
Walkways		14"
Draft	At Keel	21"
	At Outdrive	40"
Keel		9"
Cabin	Length	22'- 6"
	Width	8'-7 1/4"
	Height	6'- 5"
Deck	Forward	6'- 6"
	Aft	5'- 0"
	Sundeck	12'- 6"
Fuel Cap.	Single	62.5 Gals. (50 Imp. Gals.)
	Twin	125 Gals. (100 Imp. Gals.)
Water Capacity		62.5 Gals. (50 Imp. Gals.)
Hull		Marine Aluminum
Cabin Structure		Marine Aluminum
Hand Rails		Marine Aluminum
Insulation	Hull	420 lb Foamed-in-place Polyurethane
	Cabin	Fibreglass Blankets
Windows and Doors		Heavy-duty, Marine-type Anodized Aluminum Frames, Safety Glass
Hatch Size	Forward	2 Ft Square
	Aft	3—3'-0" x 4'-3"
Weight	2-225 hp Mercruiser	12,000 lb.
	2-155 hp OMC	11,100 lb.

Standard Equipment

Teak Panelled Interior trimmed with Anodized Aluminum and Natural Teak

Mouldings

Foamed Cushions — Nylon Fabric Upholstery

Carpeted Cabin Floors

Window Curtains

'L' Shaped Convertible Seat in Pilot House to sleep Two

Dinette and Rear Couches Convert to Double Beds

Chart Shelf & Bar Combined mounted on Pilot Cabin Front Wall

Nine Foot Galley with Formica Top

Under Counter Refrigerator — 110V

Three Burner Electric Range & Oven — 110V

Stainless Steel Sink

Wall Mounted & Under Counter Cabinets

Full Height Hang Up Closets

Ample Drawers and Storage Compartment

Standard Head complete with Shower

Hot & Cold Running Water

Two Lighting Circuits — 110V & 12V

Polarity Indicator on Control Panel

Ship to Shore 110V Dock Plugs

110V Duplex Outlets

6.5 kW Generator

International Navigation Lights

Bilge Pumps

Engine Compartment Exhaust Blower

Non Skid Deck Finish

Low & High Tone Horns

Separate Engine Compartment

Heavy Duty Windshield Wiper

Pilot Seat

Bottom Paint



Another Alcan housing development

The Alcan '290' is a unique concept in boating. It combines the speed of a cruiser with the comforts of home, for less cost than any craft in its class. Like the Alcan floating docks, the '290' is another good example of the way Alcan works with new ideas.

It takes a dynamic, youthful outlook to

put new concepts on the drawing board.

Then, experience, hard work, and an intimate knowledge of the marketplace to make these concepts work — for the diverse needs of today's and tomorrow's consumers.

It's like that at Alcan. We're right at home with a new idea, but we never leave it there.

ALUMINUM COMPANY OF CANADA, LTD

